

ASFV p54 (ECD) protein, His Tag

Cat. No. GTX137950-pro

Applications ELISA, Lateral Flow, Sandwich ELISA

Species African swine fever virus

Package

100 µg

Applications

Application Note

For Sandwich ELISA, we would recommend the following pairs :

Capture: GTX636700, Detection : GTX636703.

Please notice that GTX636703 needs to be conjugated to HRP to function as the detection antibody when paired with GTX636700. Please contact us for custom HRP-conjugated antibody.

For Lateral Flow, we would recommend the following pairs :

Capture : GTX636701, Detection : GTX635691 / GTX636562 or Capture : GTX635690 / GTX635691 / GTX636563 / GTX636700, Detection : GTX636562,

or Capture : GTX635690 / GTX635691 / GTX636563 / GTX636700 / GTX636701, Detection : GTX636703

Properties

Form Lyophilized powder

Buffer Reconstitute with distilled water to 0.5 mg/ml. Lyophilized from PBS, 2% Trehalose, 5% Mannitol, 0.01% Tween-80.

Preservative No preservatives

Storage Store at 4°C or below. After reconstitution, keep as concentrated solution. Aliquot and store at -20°C or below. Avoid multiple freeze-thaw cycles. For long-term storage after reconstitution, aliquot and store at -70°C or below. Do not vortex.

Region/Sequence ASFV p54 (53-184 aa) region of NP_042818.1 and a C-terminal His tag.

Expression System HEK293 cells

Purity > 95%

Conjugation Unconjugated

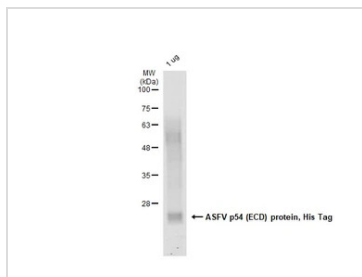
Note

For laboratory research use only. Not for any clinical, therapeutic, or diagnostic use in humans or animals. Not for animal or human consumption.

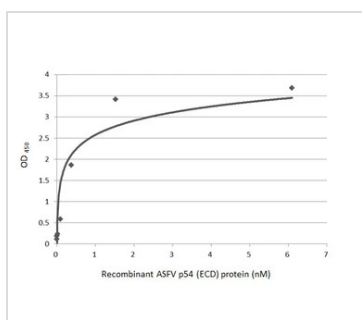
Purchasers shall not, and agree not to enable third parties to, analyze, copy, reverse engineer or otherwise attempt to determine the structure or sequence of the product.



For full product information, images and publications, please visit our [website](https://www.genetex.com).

DATA IMAGES

GTX137950-pro Image

GTX137950-pro ASFV p54 (ECD) protein, His Tag were analyzed using SDS-PAGE and stained with coomassie blue and captured by monochrome camera.

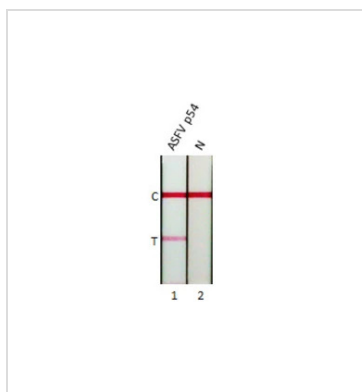

GTX137950-pro Image

Sandwich ELISA detection of recombinant HEK293 expressed, full-length ASFV p54, His Tag (GTX137950-pro) using antibodies as below.

Capture: ASFV p54 antibody [HL1286] (GTX636700) (5 µg/mL)

Detection: HRP-conjugated ASFV p54 antibody [HL1289] (GTX636703) (1 µg/mL)

Please notice that GTX636703 needs to be conjugated to HRP to function as the detection antibody when paired with GTX636700. Please contact us for custom HRP-conjugated antibody.


GTX137950-pro Lateral Flow Image

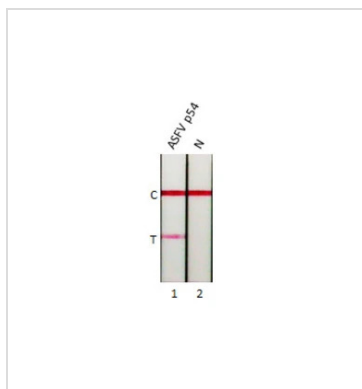
Detection of HEK293 expressed, ASFV p54 (ECD) protein by lateral flow assay using the monoclonal antibody pair.

Capture: ASFV p54 antibody (GTX636563 [HL1219])

Detection: ASFV p54 antibody (GTX636562 [HL1218])

Samples (20 ng) :

1. ASFV p54 (ECD) protein (GTX137950-pro)
2. Lysis buffer


GTX137950-pro Lateral Flow Image

Detection of HEK293 expressed, ASFV p54 (ECD) protein by lateral flow assay using the monoclonal antibody pair.

Capture: ASFV p54 antibody (GTX636701 [HL1287])

Detection: ASFV p54 antibody (GTX636562 [HL1218])

Samples (10 ng) :

1. ASFV p54 (ECD) protein (GTX137950-pro)
2. Lysis buffer



For full product information, images and publications, please visit our [website](https://www.genetex.com).