

ACTR1A antibody, C-term

Cat. No. GTX13796

Host	Goat
Clonality	Polyclonal
Isotype	IgG
Applications	WB
Reactivity	Human

Package
100 µg

Applications

Application Note

*Optimal dilutions/concentrations should be determined by the researcher.

Suggested dilution	Recommended dilution
WB	1-3µg/ml

Not tested in other applications.

Calculated MW 43 kDa. ([Note](#))**Product Note** This epitope was selected to minimise the chance of cross-reactivity with ACTR1B (YEEDGSRAIHRKT).

Properties

Form	Liquid
Buffer	TBS, 0.5% BSA
Preservative	0.02% Sodium azide
Storage	Store as concentrated solution. Centrifuge briefly prior to opening vial. For short-term storage (1-2 weeks), store at 4°C. For long-term storage, aliquot and store at -20°C or below. Avoid multiple freeze-thaw cycles.
Concentration	0.50 mg/ml (Please refer to the vial label for the specific concentration.)
Immunogen	Peptide with sequence C-YEEDGARSIRHRT, from the C Terminus of the protein sequence according to NP_005727.1.
Purification	Purified by ammonium sulphate precipitation followed by antigen affinity chromatography
Conjugation	Unconjugated

Note

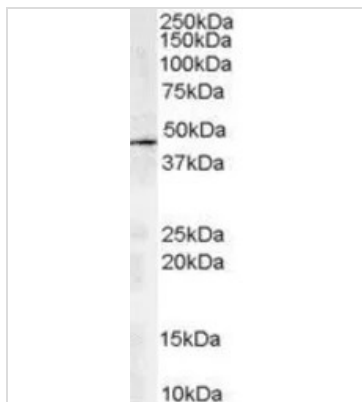
For laboratory research use only. Not for any clinical, therapeutic, or diagnostic use in humans or animals. Not for animal or human consumption.

Purchasers shall not, and agree not to enable third parties to, analyze, copy, reverse engineer or otherwise attempt to determine the structure or sequence of the product.



For full product information, images and publications, please visit our [website](#).

DATA IMAGES



GTX13796 WB Image

WB analysis of human kidney lysate using GTX13796 ACTR1A antibody, C-term.

Dilution : 2µg/ml

Loading : 35µg protein in RIPA buffer



For full product information, images and publications, please visit our [website](#).