

Human GM-CSF protein (active)

Cat. No. GTX137974-pro

Applications	Functional Assay
Species	Human

Package
100 µg

PRODUCT

Summary

GM-CSF, a colony stimulating factor also known as CSF2, mediates the proliferation, differentiation, and functions of hematopoietic precursor cells. This bioactive recombinant human GM-CSF is a 14.6 kDa globular protein formed by a 128 a.a. polypeptide with two intramolecular disulfide bonds and two potential N-linked glycosylation sites.

Applications

Application Note

The ED₅₀ was determined by a cell proliferation assay using TF-1 cells is ≤ 0.1 ng/ml, corresponding to a specific activity of $\geq 1 \times 10^7$ units/mg.

Observed MW (kDa) 14 kDa.

Properties

Form	Lyophilized powder
Buffer	Reconstitute with distilled water to 0.1 mg/ml. Lyophilized from 50mM PBS, 100mM NaCl, 5% Trehalose.
Preservative	No preservatives
Storage	Store at 4°C or below. After reconstitution, keep as concentrated solution. Aliquot and store at -20°C or below. Avoid multiple freeze-thaw cycles. For long-term storage after reconstitution, aliquot and store at -70°C or below. Do not vortex.
Region/Sequence	Human full-length GM-CSF protein (18-144 a.a. of NP_000749.2, signal peptide removed)
Expression System	E. Coli
Purity	>98%
Endotoxin	< 1 EU/µg
Conjugation	Unconjugated

Note

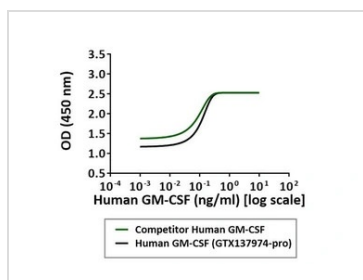
For laboratory research use only. Not for any clinical, therapeutic, or diagnostic use in humans or animals. Not for animal or human consumption.

Purchasers shall not, and agree not to enable third parties to, analyze, copy, reverse engineer or otherwise attempt to determine the structure or sequence of the product.



For full product information, images and publications, please visit our [website](#).

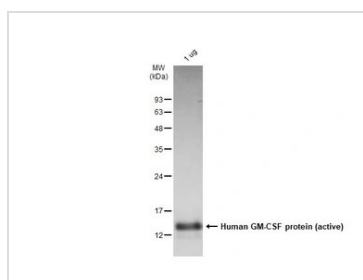
DATA IMAGES



GTX137974-pro Functional Assay Image

Serial dilutions of Human GM-CSF protein (active) were added to TF-1 cells. Cell proliferation was measured and the linear portion of the curve was used to calculate the ED50.

*This product has been tested against the competitor and the biological activity is better than competitor.



GTX137974-pro Image

1 µg of GTX137974-pro Human GM-CSF protein (active) was analyzed using SDS-PAGE and stained with coomassie blue and captured by monochrome camera.



For full product information, images and publications, please visit our [website](https://www.genetex.com).