

TEM8 antibody [200C1339(SB20)]

Cat. No. GTX13798

Host	Mouse
Clonality	Monoclonal
Isotype	IgG1
Applications	WB, ICC/IF, IHC-P
Reactivity	Human

Package
100 µg

Applications

Application Note

*Optimal dilutions/concentrations should be determined by the researcher.

Suggested dilution	Recommended dilution
WB	1 - 3 µg/ml
ICC/IF	1:10 - 1:500
IHC-P	2 - 5 µg/ml

Not tested in other applications.

Calculated MW 63 kDa. ([Note](#))

Properties

Form	Liquid
Buffer	PBS, 0.05% BSA
Preservative	0.05% Sodium azide
Storage	Store as concentrated solution. Centrifuge briefly prior to opening vial. For short-term storage (1-2 weeks), store at 4°C. For long-term storage, aliquot and store at -20°C or below. Avoid multiple freeze-thaw cycles.
Concentration	0.5 mg/ml (Please refer to the vial label for the specific concentration.)
Immunogen	This monoclonal antibody was developed by immunizing mice with a synthetic peptide containing amino acids 481-497 (CINFTRVKNNQPAKYPL) of human TEM8.
Purification	Protein G purified
Conjugation	Unconjugated

Note

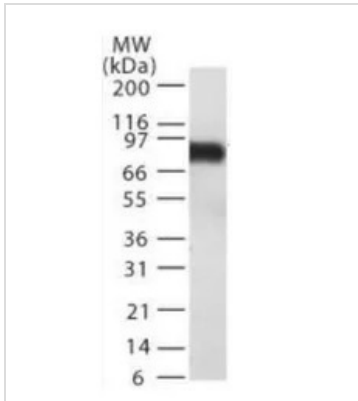
For laboratory research use only. Not for any clinical, therapeutic, or diagnostic use in humans or animals. Not for animal or human consumption.

Purchasers shall not, and agree not to enable third parties to, analyze, copy, reverse engineer or otherwise attempt to determine the structure or sequence of the product.



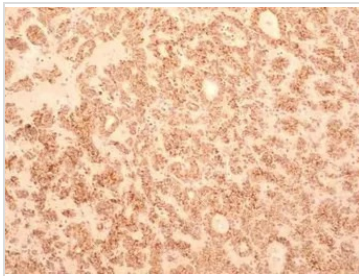
For full product information, images and publications, please visit our [website](#).

DATA IMAGES



GTX13798 WB Image

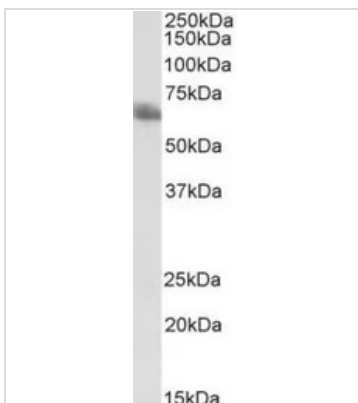
WB analysis of cells overexpressing TEM8 lysate using GTX13798 TEM8 antibody [200C1339(SB20)].



GTX13798 IHC-P Image

IHC-P analysis of human liver cancer tissue using GTX13798 TEM8 antibody [200C1339(SB20)].

Dilution : 5 µg/ml

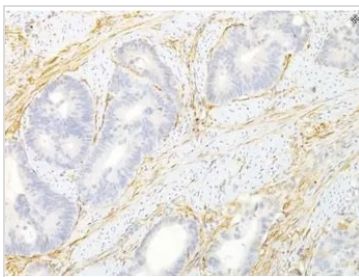


GTX13798 WB Image

WB analysis of human heart tissue lysate (in RIPA buffer) using GTX13798 TEM8 antibody [200C1339(SB20)].

Loading : 35µg

Dilution : 0.3 µg/ml



GTX13798 IHC-P Image

IHC-P analysis of human colon tissue using GTX13798 TEM8 antibody [200C1339(SB20)].

Dilution : 2.5 µg/ml



For full product information, images and publications, please visit our [website](https://www.genetex.com).