

Bacillus anthracis Lethal Factor antibody

Cat. No. GTX13806

Host	Rabbit
Clonality	Polyclonal
Isotype	IgG
Applications	WB
Reactivity	Bacillus anthracis

Package
200 µl

Applications

Application Note

*Optimal dilutions/concentrations should be determined by the researcher.

Suggested dilution	Recommended dilution
WB	1:1000

Not tested in other applications.

Properties

Form	Liquid
Buffer	Serum diluted with PBS, 0.2% Gelatin
Preservative	0.05% Sodium azide
Storage	Store as concentrated solution. Centrifuge briefly prior to opening vial. For short-term storage (1-2 weeks), store at 4°C. For long-term storage, aliquot and store at -20°C or below. Avoid multiple freeze-thaw cycles.
Immunogen	The antibody was developed by immunizing rabbits with synthetic peptides corresponding to amino acids 290-306 of the Anthrax LF protein (approx. 90 kD).
Purification	Unpurified
Conjugation	Unconjugated

Note

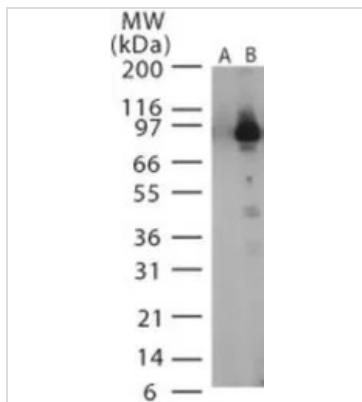
For laboratory research use only. Not for any clinical, therapeutic, or diagnostic use in humans or animals. Not for animal or human consumption.

Purchasers shall not, and agree not to enable third parties to, analyze, copy, reverse engineer or otherwise attempt to determine the structure or sequence of the product.



For full product information, images and publications, please visit our [website](#).

DATA IMAGES



GTx13806 WB Image

WB analysis of recombinant anthrax LF protein using GTx13806 Bacillus anthracis Lethal Factor antibody.

Lane 1 : pre-bleed

Lane 2 : primary antibody



For full product information, images and publications, please visit our [website](https://www.genetex.com).