

# Bacillus anthracis Lethal Factor antibody

**Cat. No. GTX13807**

<b>Host</b>	Rabbit
<b>Clonality</b>	Polyclonal
<b>Isotype</b>	IgG
<b>Applications</b>	WB
<b>Reactivity</b>	Bacillus anthracis

**Package**  
200 µl

## Applications

### Application Note

\*Optimal dilutions/concentrations should be determined by the researcher.

Suggested dilution	Recommended dilution
WB	1:1000

Not tested in other applications.

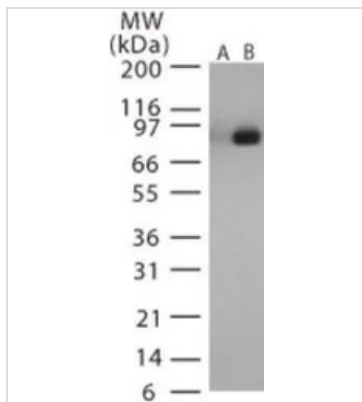
## Properties

<b>Form</b>	Liquid
<b>Buffer</b>	Serum diluted with PBS, 0.2% Gelatin
<b>Preservative</b>	0.05% Sodium azide
<b>Storage</b>	Store as concentrated solution. Centrifuge briefly prior to opening vial. For short-term storage (1-2 weeks), store at 4°C. For long-term storage, aliquot and store at -20°C or below. Avoid multiple freeze-thaw cycles.
<b>Immunogen</b>	The antibody was developed by immunizing rabbits with synthetic peptides corresponding to amino acids 779-792 of the Anthrax LF protein (approx. 90 kD).
<b>Purification</b>	Unpurified
<b>Conjugation</b>	Unconjugated
<b>Note</b>	For laboratory research use only. Not for any clinical, therapeutic, or diagnostic use in humans or animals. Not for animal or human consumption.  Purchasers shall not, and agree not to enable third parties to, analyze, copy, reverse engineer or otherwise attempt to determine the structure or sequence of the product.



For full product information, images and publications, please visit our [website](#).

## DATA IMAGES



### GTX13807 WB Image

WB analysis of recombinant anthrax LF protein using GTX13807 Bacillus anthracis Lethal Factor antibody.

Lane 1 : pre-bleed

Lane 2 : primary antibody



For full product information, images and publications, please visit our [website](https://www.genetex.com).