

SARS-CoV-2 (COVID-19) Spike RBD Protein, Omicron / XBB.1.5 variant, His tag

Cat. No. GTX138287-pro**Applications** ELISA, Sandwich ELISA**Species** SARS Coronavirus 2**Package**

100 µg

Applications

Application Note

For Sandwich ELISA, we would recommend the following pairs :

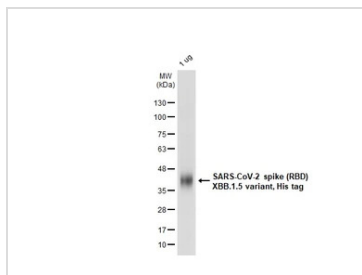
Capture : GTX635807, Detection : GTX637591.

Please notice that GTX637591 needs to be conjugated to HRP to function as the detection antibody when paired with GTX635807. Please contact us for custom HRP-conjugated antibody.

Properties

Form Lyophilized powder**Buffer** Reconstitute with distilled water to 0.7 mg/ml. Lyophilized from PBS, 2% Trehalose, 5% Mannitol, 0.01% Tween-80.**Preservative** No preservatives**Storage** Store at 4°C or below. After reconstitution, keep as concentrated solution. Aliquot and store at -20°C or below. Avoid multiple freeze-thaw cycles. For long-term storage after reconstitution, aliquot and store at -70°C or below. Do not vortex.**Region/Sequence** SARS-CoV-2 Spike RBD of QHD43416.1 (319-541 a.a.) with R346T, G339H, L368I, S371F, S373P, S375F, T376A, D405N, R408S, K417N, N440K, V445P, G446S, N460K, S477N, T478K, E484A, F486P, F490S, Q498R, N501Y, Y505H and a C-terminal His tag.**Expression System** HEK293 cells**Purity** > 95%**Conjugation** Unconjugated**Note** For *In vitro* laboratory use only. Not for any clinical, therapeutic, or diagnostic use in humans or animals. Not for animal or human consumption.

DATA IMAGES

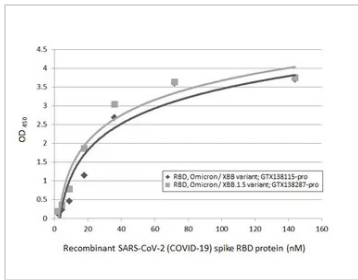


GTX138287-pro Image

GTX138287-pro SARS-CoV-2 spike (RBD) XBB.1.5 variant, His tag was analyzed using SDS-PAGE and stained with coomassie blue and captured by monochrome camera.

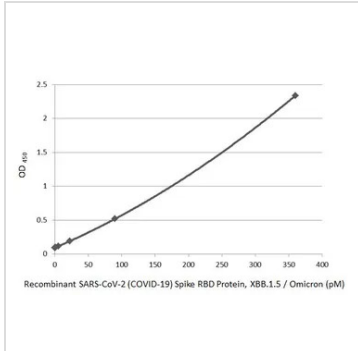


For full product information, images and publications, please visit our [website](#).



GTX138287-pro ELISA Image

Indirect ELISA analysis was performed by coating the plate with recombinant Spike RBD Protein(s) derived from different strains of SARS-CoV-2 virus (ie., Omicron / XBB variant; Omicron / XBB.1.5 variant) (143.88-2.25 nM). Coated protein was probed with SARS-CoV-2 (COVID-19) Spike RBD antibody [HL1014] (GTX635807) (1 µg/mL). Goat anti-rabbit IgG antibody (HRP) (GTX213110-01) (1:10000) was used to detect the bound primary antibody.



GTX138287-pro ELISA Image

Sandwich ELISA detection of recombinant SARS-CoV-2 (COVID-19) Spike RBD Protein, Omicron / XBB.1.5 variant, His tag (GTX138287-pro) using antibodies as below.

Capture: SARS-CoV-2 (COVID-19) Spike RBD antibody [HL1014] (GTX635807) (5 µg/mL)

Detection: HRP-conjugated SARS-CoV-2 (COVID-19) Spike RBD Omicron antibody [HL1866] (GTX637591) (1 µg/mL)

Please notice that GTX637591 needs to be conjugated to HRP to function as the detection antibody when paired with GTX635807. Please contact us for custom HRP-conjugated antibody.



For full product information, images and publications, please visit our [website](https://www.genetex.com).