

Human PLGF protein, His tag

Cat. No. GTX138450-pro**Applications** ELISA, Sandwich ELISA**Species** Human**Package**

100 µg

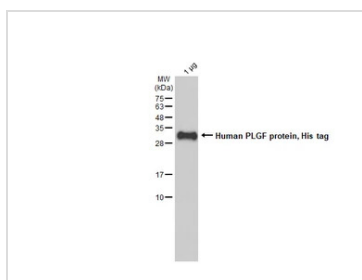
Properties

Form Liquid**Buffer** 1M Tris-Arginine**Preservative** No preservatives**Storage** Store as concentrated solution. Centrifuge briefly prior to opening vial. Aliquot and store at -20°C or below. Avoid multiple freeze-thaw cycles. For long-term storage after reconstitution, aliquot and store at -70°C or below. Do not vortex.**Concentration** 0.6 mg/ml (Please refer to the vial label for the specific concentration.)**Region/Sequence** C-terminal His tagged full-length Human PGF protein (1-170aa of NP_002623.2)**Expression System** HEK293 cells**Purity** >95%**Conjugation** Unconjugated**Note**

For laboratory research use only. Not for any clinical, therapeutic, or diagnostic use in humans or animals. Not for animal or human consumption.

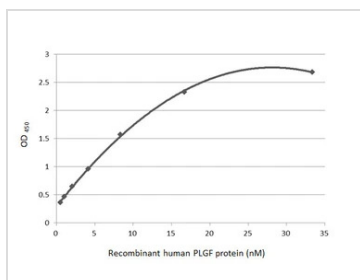
Purchasers shall not, and agree not to enable third parties to, analyze, copy, reverse engineer or otherwise attempt to determine the structure or sequence of the product.

DATA IMAGES

**GTX138450-pro Image**

GTX138450-pro Human PLGF protein, His tag was analyzed using SDS-PAGE and stained with coomassie blue and captured by monochrome camera.

For full product information, images and publications, please visit our [website](https://www.genetex.com).


GTX138450-pro ELISA Image

Sandwich ELISA detection of recombinant Human PLGF protein, His tag (GTX138450-pro) using antibodies as below.

Capture: PLGF antibody [GT57] (GTX641446) (5 µg/mL)

Detection: PLGF antibody [HL2682] (GTX639346) (1 µg/mL)



For full product information, images and publications, please visit our [website](https://www.genetex.com).