

Enterovirus 71 VP1 protein, His tag

Cat. No. GTX138560-pro

Applications ELISA, Sandwich ELISA

Species Enterovirus 71

Package

100 µg

Applications

Application Note

Recommended antibody pairs for sandwich ELISA:

Capture : GTX637688, Detection : GTX637687

Please notice that GTX637687 needs to be conjugated to HRP to function as the detection antibody when paired with GTX637688. Please contact us for custom HRP-conjugated antibody.

Properties

Form Lyophilized powder

Buffer Reconstitute with distilled water to 1.0 mg/ml. Lyophilized from PBS, 0.1%SDS, and 5%Trehalose.

Preservative No preservatives

Storage Store at 4°C or below. After reconstitution, keep as concentrated solution. Aliquot and store at -20°C or below. Avoid multiple freeze-thaw cycles. For long-term storage after reconstitution, aliquot and store at -70°C or below. Do not vortex.

Region/Sequence N-terminal His Tagged full length Enterovirus 71 VP1 protein

Expression System E. Coli

Purity > 95%

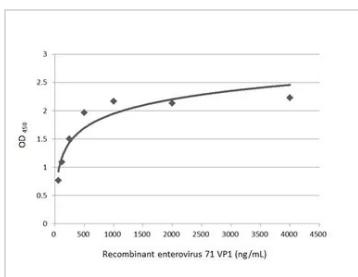
Conjugation Unconjugated

Note

For laboratory research use only. Not for any clinical, therapeutic, or diagnostic use in humans or animals. Not for animal or human consumption.

Purchasers shall not, and agree not to enable third parties to, analyze, copy, reverse engineer or otherwise attempt to determine the structure or sequence of the product.

DATA IMAGES

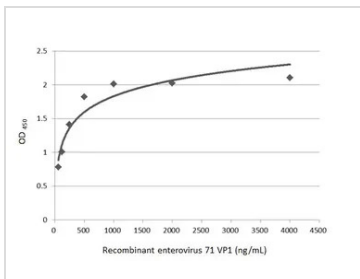


GTX138560-pro ELISA Image

Indirect ELISA analysis was performed by coating the plate with recombinant Enterovirus 71 VP1 protein, His tag (GTX138560-pro) (4000-62.5 ng/mL). Coated protein was probed with Enterovirus 71 VP1 antibody [GT185] (GTX633390) (1 µg/mL). Goat anti-mouse IgG antibody (HRP) (GTX213111-01) (1:10000) was used to detect the bound primary antibody.

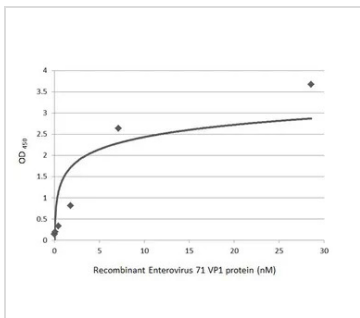


For full product information, images and publications, please visit our [website](#).



GTX138560-pro ELISA Image

Indirect ELISA analysis was performed by coating the plate with recombinant Enterovirus 71 VP1 protein, His tag (GTX138560-pro) (4000-62.5 ng/mL). Coated protein was probed with Enterovirus 71 VP1 antibody [GT9512] (GTX633583) (1 µg/mL). Goat anti-mouse IgG antibody (HRP) (GTX213111-01) (1:10000) was used to detect the bound primary antibody.



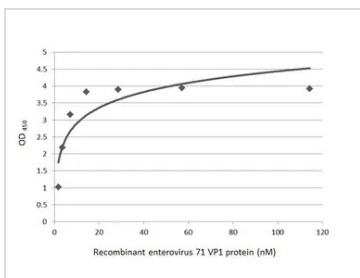
GTX138560-pro ELISA Image

Sandwich ELISA detection of recombinant Enterovirus 71 VP1 protein, His tag (GTX138560-pro) using antibodies as below.

Capture: Enterovirus 71 VP1 antibody [HL1929] (GTX637688) (5 µg/mL)

Detection: HRP-conjugated Enterovirus 71 VP1 antibody [HL1928] (GTX637687) (1 µg/mL)

Please notice that GTX637687 needs to be conjugated to HRP to function as the detection antibody when paired with GTX637688. Please contact us for custom HRP-conjugated antibody.



GTX138560-pro ELISA Image

Indirect ELISA analysis was performed by coating the plate with recombinant Enterovirus 71 VP1 protein, His tag (GTX138560-pro) (114.29-1.79 nM). Coated protein was probed with Enterovirus 71 VP1 antibody [HL1929] (GTX637688) (1 µg/mL). Goat anti-rabbit IgG antibody (HRP) (GTX213110-01) (1:10000) was used to detect the bound primary antibody.



For full product information, images and publications, please visit our [website](#).