

Bcl rambo antibody

Cat. No. GTX13862

Host	Rabbit
Clonality	Polyclonal
Isotype	IgG
Application	WB
Reactivity	Human

Package
200 µl

APPLICATION

Application Note

*Optimal dilutions/concentrations should be determined by the researcher.

Suggested dilution	Recommended dilution
WB	1:250 - 1:1000
Not tested in other applications.	

Calculated MW 53 kDa. ([Note](#))

PROPERTIES

Form	Liquid
Buffer	Serum diluted with PBS, 0.2% Gelatin
Preservative	0.05% Sodium azide
Storage	Store as concentrated solution. Centrifuge briefly prior to opening vial. For short-term storage (1-2 weeks), store at 4°C. For long-term storage, aliquot and store at -20°C or below. Avoid multiple freeze-thaw cycles.
Immunogen	This antibody was developed against a synthetic peptide corresponding to a portion of human Bcl-rambo.
Purification	Unpurified
Conjugation	Unconjugated

Note

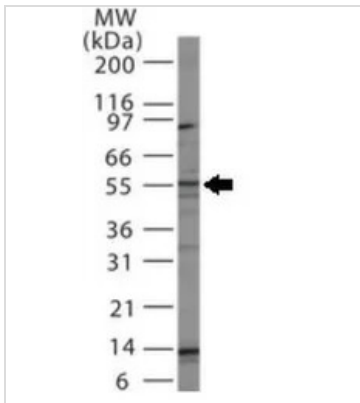
For laboratory research use only. Not for any clinical, therapeutic, or diagnostic use in humans or animals. Not for animal or human consumption.

Purchasers shall not, and agree not to enable third parties to, analyze, copy, reverse engineer or otherwise attempt to determine the structure or sequence of the product.



For full product information, images and publications, please visit our [website](#).

DATA IMAGES



GTX13862 WB Image

WB analysis of HeLa cell lysate using GTX13862 Bcl rambo antibody.

Loading : 15µg



For full product information, images and publications, please visit our [website](#).