

TLR4 antibody

Cat. No. GTX13867

Host	Rabbit
Clonality	Polyclonal
Isotype	IgG
Application	WB, ICC/IF, IHC-P
Reactivity	Human, Mouse, Rat, Primate

Reference (1)
Package
50 µg

APPLICATION

Application Note

*Optimal dilutions/concentrations should be determined by the researcher.

Suggested dilution	Recommended dilution
WB	2 - 5 µg/ml
ICC/IF	2 - 5 µg/ml
IHC-P	5 µg/ml

Not tested in other applications.

Calculated MW 96 kDa. ([Note](#))

PROPERTIES

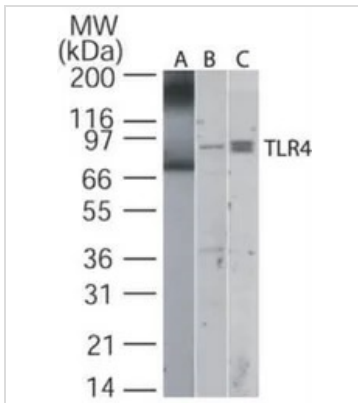
Form	Liquid
Buffer	PBS
Preservative	0.05% Sodium azide
Storage	Store as concentrated solution. Centrifuge briefly prior to opening vial. For short-term storage (1-2 weeks), store at 4°C. For long-term storage, aliquot and store at -20°C or below. Avoid multiple freeze-thaw cycles.
Concentration	1 mg/ml (Please refer to the vial label for the specific concentration.)
Immunogen	This antibody was developed against a sythetic peptide corresponding to amino acids in a range between 30-80 of mouse TLR4.
Purification	Protein G purified
Conjugation	Unconjugated

Note For laboratory research use only. Not for any clinical, therapeutic, or diagnostic use in humans or animals. Not for animal or human consumption.

Purchasers shall not, and agree not to enable third parties to, analyze, copy, reverse engineer or otherwise attempt to determine the structure or sequence of the product.

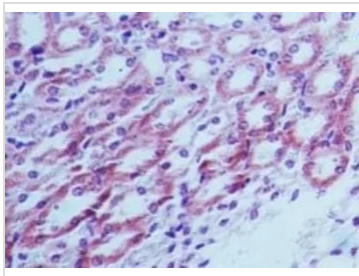


For full product information, images and publications, please visit our [website](#).

DATA IMAGES

GTX13867 WB Image

WB analysis of (A) partial recombinant mouse TLR4 protein (2 µg/ml) and (B) RAW264.7 and (C) Daudi cell lysate using GTX13867 TLR4 antibody.

Dilution : 5 µg/ml


GTX13867 IHC-P Image

IHC-P analysis of mouse kidney tissue using GTX13867 TLR4 antibody.

Dilution : 5 µg/ml



For full product information, images and publications, please visit our [website](https://www.genetex.com).