

hCG beta protein, His tag

Cat. No. GTX138833-pro**Applications** ELISA, Lateral Flow, Sandwich ELISA**Species** Human**Package**

100 µg

Applications

Application Note

Recommended antibody pairs for sandwich ELISA:

Capture: GTX641721, Detection: GTX641720

Observed MW (kDa) 40 kDa.

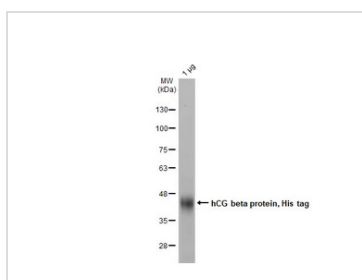
Properties

Form Lyophilized powder**Buffer** Reconstitute with distilled water to 1 mg/ml. Lyophilized from PBS, 2% Trehalose, 5% Mannitol, 0.01% Tween-80.**Preservative** No preservatives**Storage** Store at 4°C or below. After reconstitution, keep as concentrated solution. Aliquot and store at -20°C or below. Avoid multiple freeze-thaw cycles. For long-term storage after reconstitution, aliquot and store at -70°C or below. Do not vortex.**Region/Sequence** C-terminal His tagged hCG beta protein (1-165 a.a. of NP_000728.1)**Expression System** HEK293 cells**Purity** >85%**Conjugation** Unconjugated**Note**

For laboratory research use only. Not for any clinical, therapeutic, or diagnostic use in humans or animals. Not for animal or human consumption.

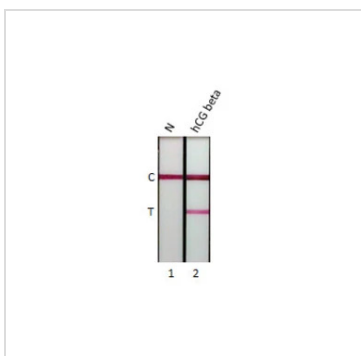
Purchasers shall not, and agree not to enable third parties to, analyze, copy, reverse engineer or otherwise attempt to determine the structure or sequence of the product.

DATA IMAGES

**GTX138833-pro Image**

GTX138833-pro Human hCG beta protein, His tag was analyzed using SDS-PAGE and stained with coomassie blue and captured by monochrome camera.

For full product information, images and publications, please visit our [website](#).



GTX138833-pro Lateral Flow Image

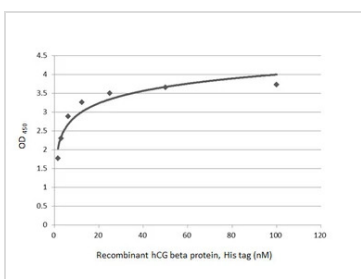
Detection of recombinant hCG beta protein by lateral flow assay using the monoclonal antibody pair.

Capture: hCG beta antibody [GT76] (GTX641721)

Detection: hCG beta antibody [GT75] (GTX641720)

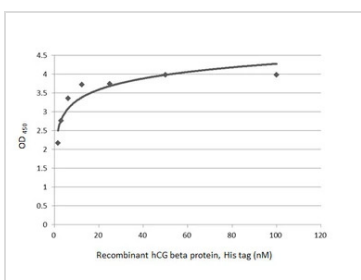
Samples (20 ng) :

1. Running buffer (N)
2. hCG beta protein (GTX138833-pro)



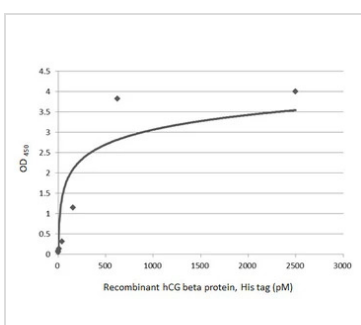
GTX138833-pro ELISA Image

Indirect ELISA analysis was performed by coating the plate with recombinant hCG beta protein, His tag (GTX138833-pro) (1.56-100 nM). Coated protein was probed with hCG beta antibody [GT76] (GTX641721) (1 µg/mL). Goat anti-mouse IgG antibody (HRP) (GTX213111-01) (1:10000) was used to detect the bound primary antibody.



GTX138833-pro ELISA Image

Indirect ELISA analysis was performed by coating the plate with recombinant hCG beta protein, His tag (GTX138833-pro) (1.56-100 nM). Coated protein was probed with hCG beta antibody [GT75] (GTX641720) (1 µg/mL). Goat anti-mouse IgG antibody (HRP) (GTX213111-01) (1:10000) was used to detect the bound primary antibody.



GTX138833-pro ELISA Sandwich ELISA Image

Sandwich ELISA detection of recombinant hCG beta protein, His tag (GTX138833-pro) using antibodies as below.

Capture: hCG beta antibody [GT76] (GTX641721) (5 µg/mL)

Detection: HRP-conjugated hCG beta antibody [GT75] (GTX641720) (1 µg/mL)

Please notice that GTX641720 needs to be conjugated to HRP to function as the detection antibody when paired with GTX641721. Please contact us for custom HRP-conjugated antibody.



For full product information, images and publications, please visit our [website](#).