

## DR4 antibody [32A242]

**Cat. No. GTX13890**

<b>Host</b>	Mouse
<b>Clonality</b>	Monoclonal
<b>Isotype</b>	IgG1
<b>Applications</b>	WB, ICC/IF
<b>Reactivity</b>	Human, Mouse, Rat

**Package**  
100 µg

## Applications

**Application Note**

\*Optimal dilutions/concentrations should be determined by the researcher.

Suggested dilution	Recommended dilution
WB	1 - 3 µg/ml
ICC/IF	Assay dependent

Not tested in other applications.

**Calculated MW** 50 kDa. ([Note](#))

## Properties

<b>Form</b>	Liquid
<b>Buffer</b>	PBS
<b>Preservative</b>	0.05% Sodium azide
<b>Storage</b>	Store as concentrated solution. Centrifuge briefly prior to opening vial. For short-term storage (1-2 weeks), store at 4°C. For long-term storage, aliquot and store at -20°C or below. Avoid multiple freeze-thaw cycles.
<b>Concentration</b>	1 mg/ml (Please refer to the vial label for the specific concentration.)
<b>Immunogen</b>	This monoclonal antibody was raised against a peptide corresponding to amino acid 2 to 21 of human DR4.
<b>Purification</b>	Protein G purified
<b>Conjugation</b>	Unconjugated

**Note**

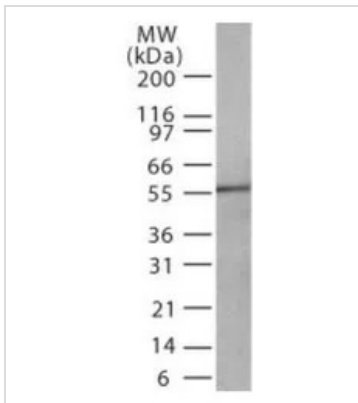
For laboratory research use only. Not for any clinical, therapeutic, or diagnostic use in humans or animals. Not for animal or human consumption.

Purchasers shall not, and agree not to enable third parties to, analyze, copy, reverse engineer or otherwise attempt to determine the structure or sequence of the product.



For full product information, images and publications, please visit our [website](#).

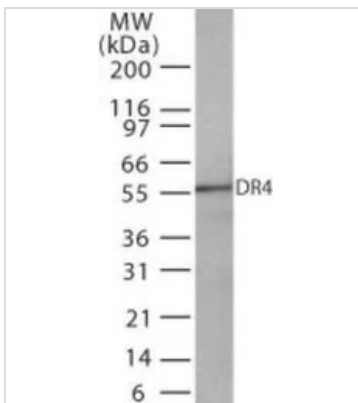
## DATA IMAGES

**GTX13890 WB Image**

WB analysis of HeLa cell lysate using GTX13890 DR4 antibody [32A242].

Dilution : 2 µg/ml

Loading : 20µg

**GTX13890 WB Image**

WB analysis of HeLa cell lysate using GTX13890 DR4 antibody [32A242].

Dilution : 2 µg/ml

Loading : 20µg



For full product information, images and publications, please visit our [website](#).