

5-HT7 receptor antibody

Cat. No. GTX13898

Host	Rabbit
Clonality	Polyclonal
Isotype	IgG
Applications	WB, ICC/IF
Reactivity	Human, Mouse, Rat, Dog

Package
100 µg

Applications

Application Note

*Optimal dilutions/concentrations should be determined by the researcher.

Suggested dilution	Recommended dilution
WB	1 - 2 µg/ml
ICC/IF	1:10 - 1:2000

Not tested in other applications.

Calculated MW 50 kDa. ([Note](#))

Product Note

This sequence is identical for 5-HT7R splice variants in the rat (5-HT7Ra/b/c), human (5-HT7Ra/b/d) and human 5-HT7, the mouse 5-HT7R. It is 93% conserved with dog 5-HT7Ra/b, and 81% conserved with pig 5-HT7R. The 5HT7 antibody recognizes all described 5HT7 receptor splice variants.

Properties

Form	Liquid
Buffer	PBS
Preservative	0.05% Sodium azide
Storage	Store as concentrated solution. Centrifuge briefly prior to opening vial. For short-term storage (1-2 weeks), store at 4°C. For long-term storage, aliquot and store at -20°C or below. Avoid multiple freeze-thaw cycles.
Concentration	1 mg/ml (Please refer to the vial label for the specific concentration.)
Immunogen	This antibody was developed by immunizing rabbits with a mixture of synthetic peptides corresponding to amino acids 13-28 of the rat 5-HT7R (AAA42134.1).
Purification	Protein G purified
Conjugation	Unconjugated



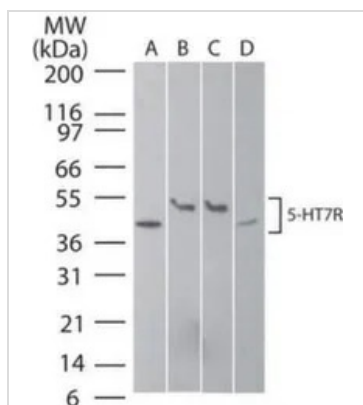
For full product information, images and publications, please visit our [website](#).

For laboratory research use only. Not for any clinical, therapeutic, or diagnostic use in humans or animals. Not for animal or human consumption.

Note

Purchasers shall not, and agree not to enable third parties to, analyze, copy, reverse engineer or otherwise attempt to determine the structure or sequence of the product.

DATA IMAGES

**GTX13898 WB Image**

WB analysis of (A) human brain, (B) mouse brain, (C) rat brain, and (D) human SK-N-SH lysate using GTX13898 5-HT7 receptor antibody.



For full product information, images and publications, please visit our [website](#).