

APE1 antibody

Cat. No. GTX13902

Host	Rabbit
Clonality	Polyclonal
Isotype	IgG
Applications	WB, IHC-P
Reactivity	Human

Package
100 µg

Applications

Application Note

*Optimal dilutions/concentrations should be determined by the researcher.

Suggested dilution	Recommended dilution
WB	2 - 5 µg/ml
IHC-P	10 µg/ml

Not tested in other applications.

Calculated MW 36 kDa. ([Note](#))

Properties

Form	Liquid
Buffer	PBS
Preservative	0.02% Sodium azide
Storage	Store as concentrated solution. Centrifuge briefly prior to opening vial. For short-term storage (1-2 weeks), store at 4°C. For long-term storage, aliquot and store at -20°C or below. Avoid multiple freeze-thaw cycles.
Concentration	0.5 mg/ml (Please refer to the vial label for the specific concentration.)
Immunogen	This antibody was developed against KLH-conjugated synthetic peptides corresponding to amino acids 36-52 and 216-232 of human APE.
Purification	Protein G purified
Conjugation	Unconjugated

Note

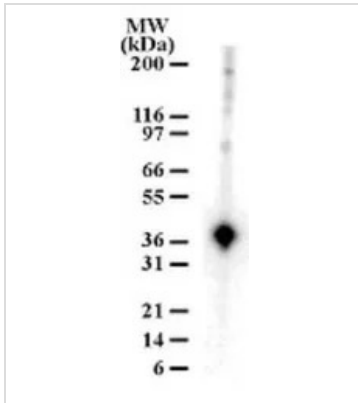
For laboratory research use only. Not for any clinical, therapeutic, or diagnostic use in humans or animals. Not for animal or human consumption.

Purchasers shall not, and agree not to enable third parties to, analyze, copy, reverse engineer or otherwise attempt to determine the structure or sequence of the product.



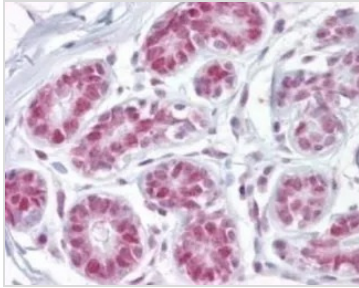
For full product information, images and publications, please visit our [website](#).

DATA IMAGES

**GTX13902 WB Image**

WB analysis of HeLa cell lysate using GTX13902 APE1 antibody.

Dilution : 2 µg/ml

**GTX13902 IHC-P Image**

IHC-P analysis of human breast tissue using GTX13902 APE1 antibody.

Dilution : 10 µg/ml



For full product information, images and publications, please visit our [website](#).