

PGRPS antibody [188C424]

Cat. No. GTX13903

Host	Mouse
Clonality	Monoclonal
Isotype	IgG3
Applications	WB, ICC/IF, IHC-P, IHC-Fr, FCM, IHC
Reactivity	Human, Mouse

Package
100 µg

Applications

Application Note

*Optimal dilutions/concentrations should be determined by the researcher.

Suggested dilution	Recommended dilution
WB	2 µg/ml
ICC/IF	1:20 - 1:1000
IHC-P	Assay dependent
IHC-Fr	1:20 - 1:1000
FCM	1:20 - 1:20000
IHC	1:20 - 1:1000

Not tested in other applications.

Calculated MW 22 kDa. ([Note](#))

Properties

Form	Liquid
Buffer	PBS
Preservative	0.05% Sodium azide
Storage	Store as concentrated solution. Centrifuge briefly prior to opening vial. For short-term storage (1-2 weeks), store at 4°C. For long-term storage, aliquot and store at -20°C or below. Avoid multiple freeze-thaw cycles.
Concentration	1 mg/ml (Please refer to the vial label for the specific concentration.)
Immunogen	This antibody was developed against KLH-conjugated synthetic peptide corresponding to amino acids 165-180 (YVLKGHHRDVQRTLSPG) of human PGRP-S (NP_005082).
Purification	Protein G purified
Conjugation	Unconjugated



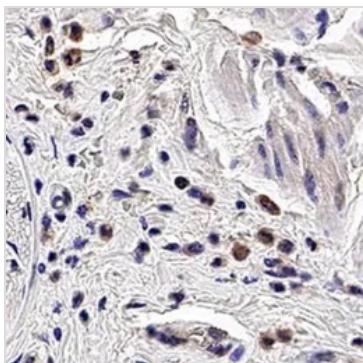
For full product information, images and publications, please visit our [website](#).

For laboratory research use only. Not for any clinical, therapeutic, or diagnostic use in humans or animals. Not for animal or human consumption.

Note

Purchasers shall not, and agree not to enable third parties to, analyze, copy, reverse engineer or otherwise attempt to determine the structure or sequence of the product.

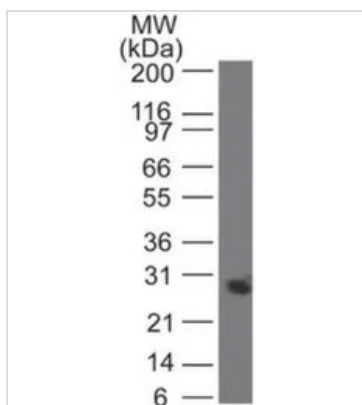
DATA IMAGES

**GTX13903 IHC-P Image**

IHC-P analysis of human esophagus tissue using GTX13903 PGRPS antibody [188C424].

Dilution : 20 µg/mL

Antigen retrieval : Heat induced antigen retrieval (HIER) using 10mM sodium citrate buffer (pH 6.0)

**GTX13903 WB Image**

WB analysis of Jurkat cell lysate using GTX13903 PGRPS antibody [188C424].

Dilution : 2 µg/ml



For full product information, images and publications, please visit our [website](#).