

Rb cleaved antibody [172C1094]

Cat. No. GTX13905

Host	Mouse
Clonality	Monoclonal
Isotype	IgG1
Applications	WB, IHC-P, IHC-Fr
Reactivity	Human, Mouse

References (1)

Package

50 µg

Applications

Application Note

*Optimal dilutions/concentrations should be determined by the researcher.

Suggested dilution	Recommended dilution
WB	2 µg/ml
IHC-P	Assay dependent
IHC-Fr	1:10 - 1:500

Not tested in other applications.

Calculated MW	106 kDa. (Note)
Product Note	The antibody recognizes cleaved Rb (DRb-p70). The antibody does not recognize full-length Rb.

Properties

Form	Liquid
Buffer	PBS, 0.05% BSA
Preservative	0.05% Sodium azide
Storage	Store as concentrated solution. Centrifuge briefly prior to opening vial. For short-term storage (1-2 weeks), store at 4°C. For long-term storage, aliquot and store at -20°C or below. Avoid multiple freeze-thaw cycles.
Concentration	0.5 mg/ml (Please refer to the vial label for the specific concentration.)
Immunogen	A synthetic peptide corresponding to a region of the caspase-3-induced cleavage site of human Rb was used as immunogen.
Purification	Protein G purified
Conjugation	Unconjugated



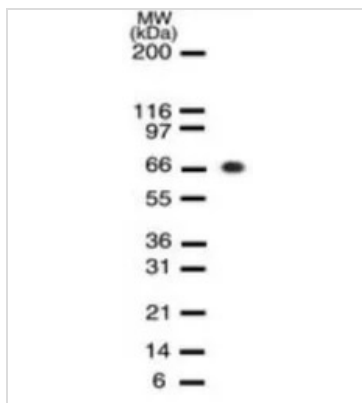
For full product information, images and publications, please visit our [website](#).

For laboratory research use only. Not for any clinical, therapeutic, or diagnostic use in humans or animals. Not for animal or human consumption.

Note

Purchasers shall not, and agree not to enable third parties to, analyze, copy, reverse engineer or otherwise attempt to determine the structure or sequence of the product.

DATA IMAGES



GTX13905 WB Image

WB analysis of HL-60 cells treated with camptothecin for 24 hours using GTX13905 Rb cleaved antibody [172C1094].



For full product information, images and publications, please visit our [website](https://www.genetex.com).