

# Lamin A + C antibody

**Cat. No. GTX13910**

<b>Host</b>	Rabbit
<b>Clonality</b>	Polyclonal
<b>Isotype</b>	IgG
<b>Applications</b>	WB, ICC/IF, FCM
<b>Reactivity</b>	Human, Mouse, Rat, Bovine, Hamster, Pig, Bat, Ferret, Mink, Primate

**Package**  
200 µl

## Applications

### Application Note

\*Optimal dilutions/concentrations should be determined by the researcher.

Suggested dilution	Recommended dilution
WB	1:500 - 1:1000
ICC/IF	1:100
FCM	1:500 - 1:1000

Not tested in other applications.

<b>Calculated MW</b>	74 kDa. ( <a href="#">Note</a> )
----------------------	----------------------------------

**Product Note** Because of immunogen's 100% homology with Isoforms 1, 4, 5, 6, ADelta10 and C of Prelamin-A/C, this antibody is expected to detect multiple bands in WB.

## Properties

<b>Form</b>	Liquid
<b>Buffer</b>	Serum diluted with PBS, 50% Glycerol
<b>Preservative</b>	0.05% Sodium azide
<b>Storage</b>	Store as concentrated solution. Centrifuge briefly prior to opening vial. For short-term storage (1-2 weeks), store at 4°C. For long-term storage, aliquot and store at -20°C or below. Avoid multiple freeze-thaw cycles.
<b>Immunogen</b>	A synthetic peptide corresponding to amino acids 249-265 CRAQHEDQVEQYKKELEK of Human Lamin A/C was used immunogen.
<b>Purification</b>	Unpurified
<b>Conjugation</b>	Unconjugated



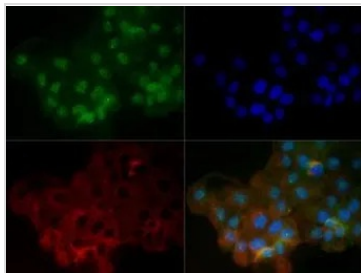
For full product information, images and publications, please visit our [website](#).

For laboratory research use only. Not for any clinical, therapeutic, or diagnostic use in humans or animals. Not for animal or human consumption.

## Note

Purchasers shall not, and agree not to enable third parties to, analyze, copy, reverse engineer or otherwise attempt to determine the structure or sequence of the product.

## DATA IMAGES



### GTXT13910 ICC/IF Image

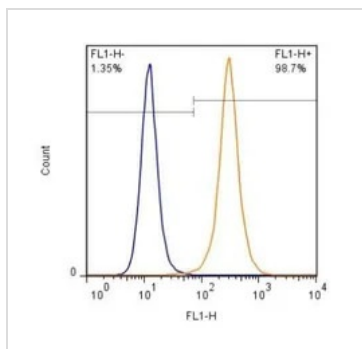
ICC/IF analysis of A431 cells using GTXT13910 Lamin A + C antibody.

Green : primary antibody

Red : Tubulin

Blue : DAPI

Dilution : 1:100



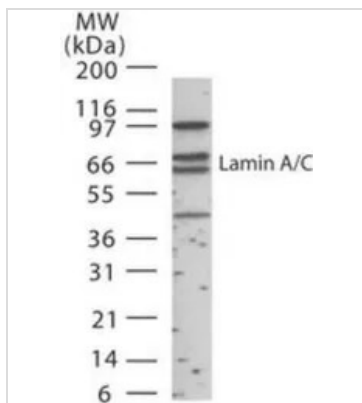
### GTXT13910 FCM Image

FACS (Intracellular staining) analysis of  $10^6$  HeLa cells using GTXT13910 Lamin A + C antibody.

Orange : Primary antibody

Blue : secondary antibody control

Dilution : 1:1000



### GTXT13910 WB Image

WB analysis of HeLa cell lysate using GTXT13910 Lamin A + C antibody.

Dilution : 1:1000

Loading : 15µg



For full product information, images and publications, please visit our [website](https://www.genetex.com).