

TLR3 antibody [40C1285.6]

Cat. No. GTX13915

Host	Mouse
Clonality	Monoclonal
Isotype	IgG1
Application	WB, ICC/IF, IHC-P, FACS, IP
Reactivity	Human, Mouse, Dog

Package
50 µg

APPLICATION

Application Note

*Optimal dilutions/concentrations should be determined by the researcher.

Suggested dilution	Recommended dilution
WB	1 - 3 µg/ml
ICC/IF	1:20 - 1:1000
IHC-P	1:20 - 1:1000
FACS	2 - 4 µg / 10 ⁶ cells
IP	2 µg/ 10 ⁶ cells

Not tested in other applications.

Calculated MW 104 kDa. ([Note](#))

PROPERTIES

Form	Liquid
Buffer	PBS, 0.05% BSA
Preservative	0.05% Sodium azide
Storage	Store as concentrated solution. Centrifuge briefly prior to opening vial. For short-term storage (1-2 weeks), store at 4°C. For long-term storage, aliquot and store at -20°C or below. Avoid multiple freeze-thaw cycles.
Concentration	1 mg/ml (Please refer to the vial label for the specific concentration.)
Immunogen	A synthetic peptide corresponding to amino acids 55-70 (VLNLTHNQLRRLPAAN) of human TLR3.
Purification	Protein G purified
Conjugation	Unconjugated

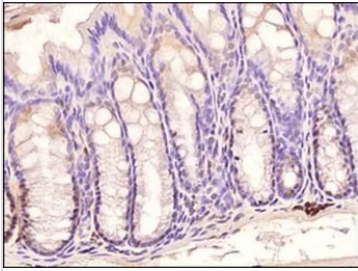


For full product information, images and publications, please visit our [website](#).

For laboratory research use only. Not for any clinical, therapeutic, or diagnostic use in humans or animals. Not for animal or human consumption.

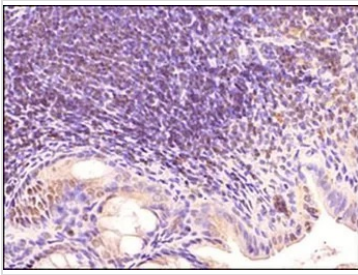
Note

Purchasers shall not, and agree not to enable third parties to, analyze, copy, reverse engineer or otherwise attempt to determine the structure or sequence of the product.

DATA IMAGES

GTX13915 IHC-P Image

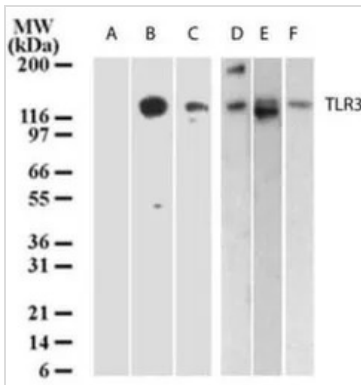
IHC-P analysis of mouse colon tissue using GTX13915 TLR3 antibody [40C1285.6].

Dilution : 1:500


GTX13915 IHC-P Image

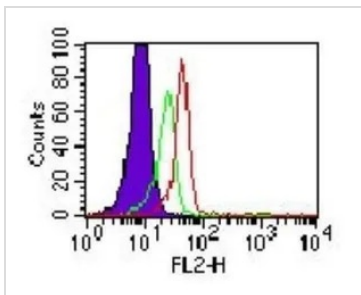
IHC-P analysis of mouse intestine tissue using GTX13915 TLR3 antibody [40C1285.6].

Dilution : 1:500


GTX13915 WB Image

WB analysis of (A) 293 cells, (B) 293 cells overexpressing human TLR3, (C) human intestine, (D) placenta, (E) heart and (F) ovary tissue lysate using GTX13915 TLR3 antibody [40C1285.6].

Dilution : 3 µg/ml


GTX13915 FACS Image

FACS (Intracellular staining) analysis of human monocyte using GTX13915 TLR3 antibody [40C1285.6].

Red : Primary antibody

Green : isotype control

Shaded histogram : cell only

Dilution : 0.5 µg/10⁶ cells



For full product information, images and publications, please visit our [website](https://www.genetex.com).