

## AKT3 antibody [66C1247]

Cat. No. GTX13919

<b>Host</b>	Mouse
<b>Clonality</b>	Monoclonal
<b>Isotype</b>	IgG1
<b>Applications</b>	WB, ICC/IF
<b>Reactivity</b>	Human, Mouse, Rat

Package

100 µg

## Applications

## Application Note

\*Optimal dilutions/concentrations should be determined by the researcher.

Suggested dilution	Recommended dilution
WB	1:100 - 1:2000
ICC/IF	Assay dependent

Not tested in other applications.

**Calculated MW** 56 kDa. ( [Note](#) )

## Properties

<b>Form</b>	Liquid
<b>Buffer</b>	PBS, 0.05% BSA
<b>Preservative</b>	0.05% Sodium azide
<b>Storage</b>	Store as concentrated solution. Centrifuge briefly prior to opening vial. For short-term storage (1-2 weeks), store at 4°C. For long-term storage, aliquot and store at -20°C or below. Avoid multiple freeze-thaw cycles.
<b>Concentration</b>	0.5 mg/ml (Please refer to the vial label for the specific concentration.)
<b>Immunogen</b>	This monoclonal antibody was raised against a synthetic peptide corresponding to amino acid residues 119-136 (CSPTSQIDNIGEEEMDAS) of human Akt3, GenBank no. gi 4574744 gb AAD24196.1 AF135794_1. This sequence is identical in human, mouse, rat, cow, dog, and chicken.
<b>Purification</b>	Protein G purified
<b>Conjugation</b>	Unconjugated

## Note

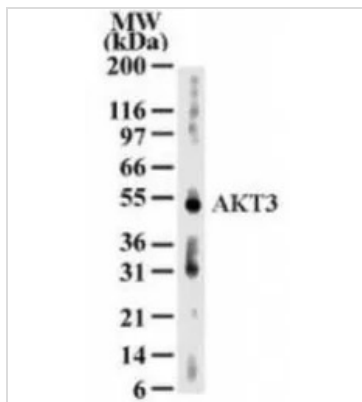
For laboratory research use only. Not for any clinical, therapeutic, or diagnostic use in humans or animals. Not for animal or human consumption.

Purchasers shall not, and agree not to enable third parties to, analyze, copy, reverse engineer or otherwise attempt to determine the structure or sequence of the product.



For full product information, images and publications, please visit our [website](#).

## DATA IMAGES



### GTX13919 WB Image

WB analysis of human kidney tissue lysate using GTX13919 AKT3 antibody [66C1247].

Dilution : 2 µg/ml

Loading : 30µg



For full product information, images and publications, please visit our [website](https://www.genetex.com).