

CENPA antibody [3-19]

Cat. No. GTX13939

Host	Mouse
Clonality	Monoclonal
Isotype	IgG1
Applications	WB, ICC/IF, IHC-P, ChIP assay, IHC, Neutralizing /Inhibition
Reactivity	Human, Chicken, Caenorhabditis elegans

References (35)

★★★★★ Review (1)

Package

50 µg

Applications

Application Note

ICC: Use at a concentration of 10 µg/ml. IHC: Use at a concentration of 5 µg/ml. For paraffin embedded sections, heat treatment may be necessary. Microwave sections 2 times for 10 minutes each in citrate buffer (pH 6.5). WB: Use at a concentration of 1 µg/ml. Detects a band of approximately 18 kDa (predicted molecular weight: 16 kDa). Optimal dilutions/concentrations should be determined by the end user. User review: This antibody is great for immunofluorescence on human cells (primary fibroblasts and transformed cell lines such as HeLa, HT1080, A549, H1299). Works well with various fixation conditions, including 1-4% paraformaldehyde (PFA), -20C methanol, 2% PFA followed by -20C methanol, and on unfixed preparations. We routinely use it at a dilution of 1:200-1:400.

Calculated MW 16 kDa. ([Note](#))

Properties

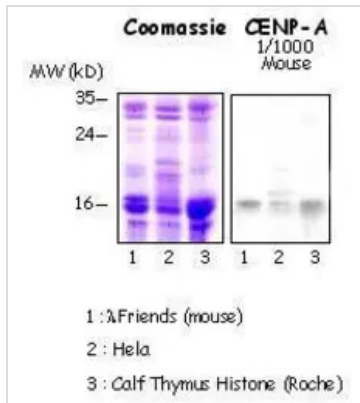
Form	Liquid
Buffer	PBS, 50% Glycerol
Preservative	No preservatives
Storage	Store as concentrated solution. Centrifuge briefly prior to opening vial. For short-term storage (1-2 weeks), store at 4°C. For long-term storage, aliquot and store at -20°C or below. Avoid multiple freeze-thaw cycles.
Concentration	1 mg/ml (Please refer to the vial label for the specific concentration.)
Immunogen	Synthetic peptide: PRRRSRKPEAPRRRSPS, corresponding to amino acids 3-19 of Human CENP A.
Purification	Protein A purified This antibody was purified using Protein A affinity chromatography.
Conjugation	Unconjugated
Note	For laboratory research use only. Not for any clinical, therapeutic, or diagnostic use in humans or animals. Not for animal or human consumption. Purchasers shall not, and agree not to enable third parties to, analyze, copy, reverse engineer or otherwise attempt to determine the structure or sequence of the product.



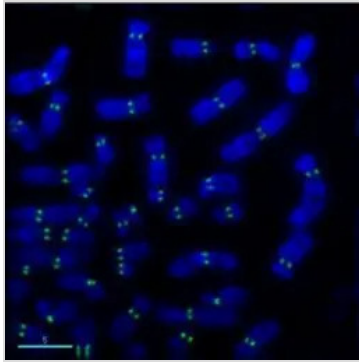
For full product information, images and publications, please visit our [website](#).

Date 2026 / 05 / 04 Page 1 of 2

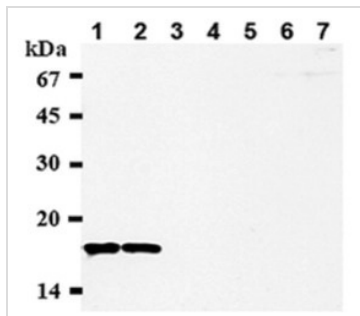
DATA IMAGES

**GTX13939 WB Image**

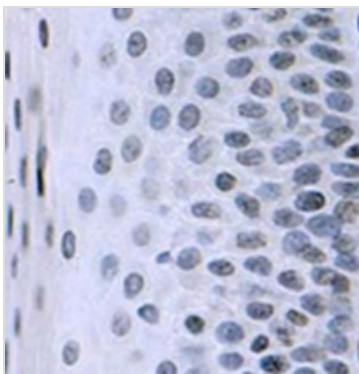
Hela cells (human), Friend cells (mouse) and calf thymus (Roche). 5 g acid-extracted histones were loaded per lane. Images taken following 5 min exposure. 1:1000 dilution. Lane 1: Friend cells (mouse); Lane 2: HeLa cells (human); Lane 3: Calf thymus. This

**GTX13939 ICC/IF Image**

This picture shows human metaphase chromosomes detected with GTX13939 as primary antibody and AF488 goat anti-mouse secondary antibody (green). This image was kindly supplied as part of the review submitted by Professor Beth A. Sullivan, Boston University

**GTX13939 WB Image**

Western blot analysis of Jurkat (1), Raji (2), PC12 (3), Rat-1 (4), WR19L (5), C2C12 (6), and NIH3T3 (7) cell lysates probed with CENP-A mAb

**GTX13939 IHC-P Image**

Immunohistochemical detection of CENP-A on paraffin embedded section of a squamous epithelium of human tonsil.



For full product information, images and publications, please visit our [website](#).