

## Mycobacterium tuberculosis ESAT6 antibody

**Cat. No. GTX13960**

<b>Host</b>	Rabbit
<b>Clonality</b>	Polyclonal
<b>Isotype</b>	IgG
<b>Applications</b>	WB
<b>Reactivity</b>	Mycobacterium tuberculosis

**Package**  
100 µg

## Applications

**Application Note**

\*Optimal dilutions/concentrations should be determined by the researcher.

Suggested dilution	Recommended dilution
WB	Assay dependent

Not tested in other applications.

**Product Note** This antibody recognizes the EsaT-6 (Rv3875) protein of Mycobacterium tuberculosis and Mycobacterium bovis.

## Properties

<b>Form</b>	Liquid
<b>Buffer</b>	PBS
<b>Preservative</b>	15mM Sodium azide
<b>Storage</b>	Store as concentrated solution. Centrifuge briefly prior to opening vial. Store at 4°C. DO NOT FREEZE.
<b>Concentration</b>	1 mg/ml (Please refer to the vial label for the specific concentration.)
<b>Immunogen</b>	EsaT-6 (Rv3875) of Mycobacterium tuberculosis
<b>Purification</b>	Purified by affinity chromatography From serum
<b>Conjugation</b>	Unconjugated

**Note**

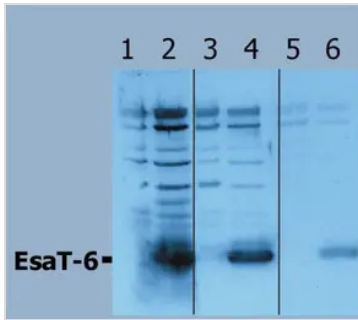
For laboratory research use only. Not for any clinical, therapeutic, or diagnostic use in humans or animals. Not for animal or human consumption.

Purchasers shall not, and agree not to enable third parties to, analyze, copy, reverse engineer or otherwise attempt to determine the structure or sequence of the product.



For full product information, images and publications, please visit our [website](#).

## DATA IMAGES

**GTX13960 WB Image**

Western Blot analysis (reducing conditions) of recombinant protein EsaT-6 using polyclonal anti-EsaT-6 antibody (GTX13960).

Lane 1, 3, 5: cell lysates of non-transfected E. coli (negative controls)

Lane 2, 4, 6: cell lysate of EsaT-6-transfected E. coli; dilution (2) 1 µg/ml, (4) 0.2 µg/ml, (6) 0.1 µg/ml;  
detection with Donkey anti-rabbit / HRP secondary antibody



For full product information, images and publications, please visit our [website](#).