

## GFP antibody

**Cat. No. GTX13970**

<b>Host</b>	Chicken
<b>Clonality</b>	Polyclonal
<b>Isotype</b>	IgY
<b>Application</b>	WB, ICC/IF, IHC-Fr, IHC-Wm, ELISA, IHC, IHC (Free Floating)
<b>Reactivity</b>	Species independent

Reference ( 38 )  
Package  
100 µl

### APPLICATION

#### Application Note

\*Optimal dilutions/concentrations should be determined by the researcher.

Suggested dilution	Recommended dilution
WB	1:5000-1:10000
ICC/IF	Assay dependent
IHC-Fr	Assay dependent
IHC-Wm	Assay dependent
ELISA	Assay dependent
IHC	1:2000-1:5000
IHC (Free Floating)	Assay dependent

Not tested in other applications.

### PROPERTIES

<b>Form</b>	Liquid
<b>Buffer</b>	Sodium Phosphate (10 mM, pH7.2) buffered isotonic saline (0.9%), 50% Glycerol
<b>Preservative</b>	0.01% Thimerosal
<b>Storage</b>	Store as concentrated solution. Centrifuge briefly prior to opening vial. Store at 4°C. DO NOT FREEZE.
<b>Concentration</b>	10 mg/ml (Please refer to the vial label for the specific concentration.)
<b>Immunogen</b>	Chickens were immunized with purified recombinant green fluorescent protein (GFP) emulsified in Freund's adjuvant.
<b>Purification</b>	Purified by antigen-affinity chromatography Serile filtered.
<b>Conjugation</b>	Unconjugated



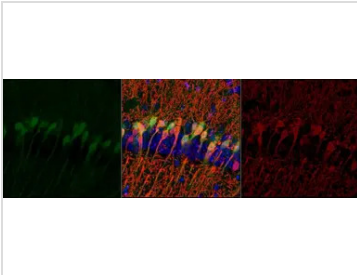
For full product information, images and publications, please visit our [website](#).

For laboratory research use only. Not for any clinical, therapeutic, or diagnostic use in humans or animals. Not for animal or human consumption.

**Note**

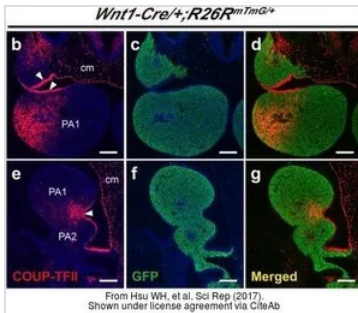
Purchasers shall not, and agree not to enable third parties to, analyze, copy, reverse engineer or otherwise attempt to determine the structure or sequence of the product.

## DATA IMAGES



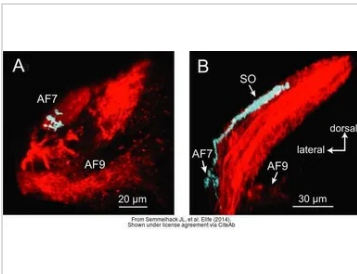
### GTX13970 IHC Image

IHC analysis of paraformaldehyde-fixed (4%) neonatal mouse brain using GTX13970 GFP antibody.



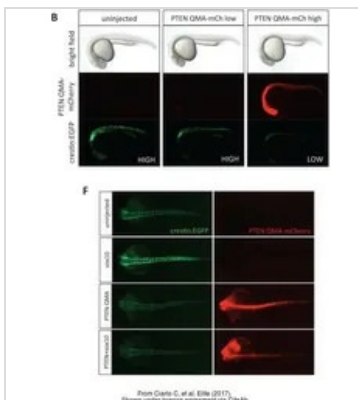
### GTX13970 IHC Image

The data was published in the journal Sci Rep in 2017. [PMID: 28959031](https://pubmed.ncbi.nlm.nih.gov/28959031/)



### GTX13970 IHC Image

The data was published in the journal Elife in 2014. [PMID: 25490154](https://pubmed.ncbi.nlm.nih.gov/25490154/)



### GTX13970 IHC-Wm Image

The data was published in the journal Elife in 2017. [PMID: 28832322](https://pubmed.ncbi.nlm.nih.gov/28832322/)



For full product information, images and publications, please visit our [website](https://www.genetex.com).