

AKT antibody

Cat. No. GTX13990

| | |
|--------------------|-------------------|
| Host | Chicken |
| Clonality | Polyclonal |
| Isotype | IgY |
| Application | WB |
| Reactivity | Human, Mouse, Rat |

Reference (3)

Package

50 µg

APPLICATION

Application Note

*Optimal dilutions/concentrations should be determined by the researcher.

| Suggested dilution | Recommended dilution |
|-----------------------------------|----------------------|
| WB | 1:500 |
| Not tested in other applications. | |

Calculated MW 56 kDa. ([Note](#))

PROPERTIES

| | |
|----------------------|--|
| Form | Liquid |
| Buffer | PBS |
| Preservative | 0.02% Sodium azide |
| Storage | Store as concentrated solution. Centrifuge briefly prior to opening vial. For short-term storage (1-2 weeks), store at 4°C. For long-term storage, aliquot and store at -20°C or below. Avoid multiple freeze-thaw cycles. |
| Concentration | Batch dependent (Please refer to the vial label for the specific concentration.) |
| Immunogen | Immunogen Sequence: GI # 62241011, sequence 2-200 Recombinant serine/threonine protein kinase |
| Purification | Purified by affinity chromatography |
| Conjugation | Unconjugated |

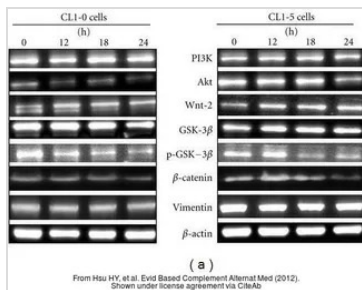
Note

For laboratory research use only. Not for any clinical, therapeutic, or diagnostic use in humans or animals. Not for animal or human consumption.

Purchasers shall not, and agree not to enable third parties to, analyze, copy, reverse engineer or otherwise attempt to determine the structure or sequence of the product.



For full product information, images and publications, please visit our [website](#).

DATA IMAGES

GTx13990 WB Image

The data was published in the journal Evid Based Complement Alternat Med in 2012. [PMID: 23320038](https://pubmed.ncbi.nlm.nih.gov/23320038/)



For full product information, images and publications, please visit our [website](https://www.genetex.com).