

CTLA4 antibody [UC10-4F10-11]

Cat. No. GTX13996

Host	Armenian Hamster
Clonality	Monoclonal
Isotype	IgG1
Applications	WB, FCM, Activation, Neutralizing /Inhibition
Reactivity	Mouse

Package
500 µg

Applications

Application Note

*Optimal dilutions/concentrations should be determined by the researcher.

Suggested dilution	Recommended dilution
WB	Assay dependent
FCM	Assay dependent
Activation	Assay dependent
Neutralizing /Inhibition	Assay dependent

Note : The UC10-4F10-11 antibody has been shown to promote T cell co-stimulation by blocking CTLA-4 binding to the B7 co-receptors, allowing for CD28 binding.

Not tested in other applications.

Calculated MW 25 kDa. ([Note](#))

Properties

Form	Liquid
Buffer	Filter-sterilized PBS
Preservative	No preservatives
Storage	Store as concentrated solution. Centrifuge briefly prior to opening vial. Store at 4°C. DO NOT FREEZE.
Concentration	Batch dependent (Please refer to the vial label for the specific concentration.)
Immunogen	Mouse CTLA-4 IgG2a fusion protein
Purification	Protein G purified From tissue culture supernatant
Purity	>95% (Determined by SDS-PAGE)
Endotoxin	< 0.002 EU/µg (Determined by LAL assay)



For full product information, images and publications, please visit our [website](#).

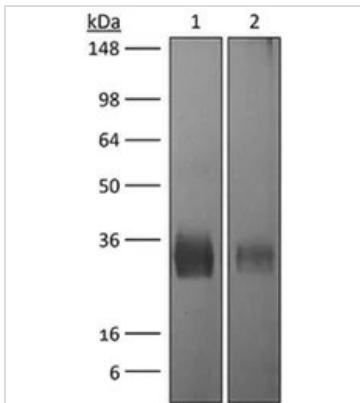
Date 2026 / 05 / 04 Page 1 of 2

Conjugation Unconjugated

For laboratory research use only. Not for any clinical, therapeutic, or diagnostic use in humans or animals. Not for animal or human consumption.

Note Purchasers shall not, and agree not to enable third parties to, analyze, copy, reverse engineer or otherwise attempt to determine the structure or sequence of the product.

DATA IMAGES



GTX13996 WB Image

WB analysis of purified CTLA4 recombinant protein using GTX13996 CTLA4 antibody [UC10-4F10-11].
 Lane 1 : 1 ug reduced purified mouse CTLA-4 with histidine tag 0.5 ug reduced purified mouse
 Dilution : 15 ug/ml



For full product information, images and publications, please visit our [website](#).