

C Reactive Protein antibody

Cat. No. GTX14008

Host	Chicken
Clonality	Polyclonal
Isotype	IgY
Applications	WB, ELISA
Reactivity	Human

Package
50 µg

Applications

Application Note

ELISA: Use at a concentration of 0.1 µg/ml. WB: Use at an assay dependent dilution. Predicted molecular weight: 117.5 kDa. Tissue or cell immunostaining: Use at a dilution of 1/200. Optimal dilutions/concentrations should be determined by the end user.

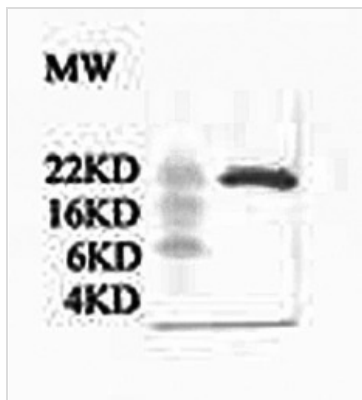
Calculated MW 25 kDa. ([Note](#))

Properties

Form	Liquid
Buffer	PBS
Preservative	No preservatives
Storage	Store as concentrated solution. Centrifuge briefly prior to opening vial. For short-term storage (1-2 weeks), store at 4°C. For long-term storage, aliquot and store at -20°C or below. Avoid multiple freeze-thaw cycles.
Concentration	1 mg/ml (Please refer to the vial label for the specific concentration.)
Immunogen	Full length native protein(Human).
Purification	Immunogen affinity purified Peptide immunogen affinity column
Conjugation	Unconjugated
Note	For laboratory research use only. Not for any clinical, therapeutic, or diagnostic use in humans or animals. Not for animal or human consumption. Purchasers shall not, and agree not to enable third parties to, analyze, copy, reverse engineer or otherwise attempt to determine the structure or sequence of the product.



For full product information, images and publications, please visit our [website](#).

DATA IMAGES

GTX14008 WB Image

Western blot analysis of GTX14008 chicken anti C Reactive protein



For full product information, images and publications, please visit our [website](#).