

PD1 antibody [J43]

Cat. No. GTX14010

Host	Armenian Hamster
Clonality	Monoclonal
Isotype	IgG
Applications	WB, Neutralizing /Inhibition
Reactivity	Mouse

Package
500 µg

Applications

Application Note

*Optimal dilutions/concentrations should be determined by the researcher.

Suggested dilution	Recommended dilution
WB	Assay dependent
Neutralizing /Inhibition	Assay dependent

Note : The J43 antibody has been shown to block the binding of both mouse PD-L1-Ig and mouse PD-L2-Ig to PD-1.

Not tested in other applications.

Calculated MW 32 kDa. ([Note](#))

Properties

Form	Liquid
Buffer	Filter-sterilized PBS
Preservative	No preservatives
Storage	Store as concentrated solution. Centrifuge briefly prior to opening vial. Store at 4°C. DO NOT FREEZE.
Concentration	Batch dependent (Please refer to the vial label for the specific concentration.)
Immunogen	Syrian Hamster BKH cells transfected with mouse PD-1 cDNA
Purification	Protein G purified From tissue culture supernatant
Purity	>95% (Determined by SDS-PAGE)
Endotoxin	< 0.002 EU/µg (Determined by LAL assay)
Conjugation	Unconjugated



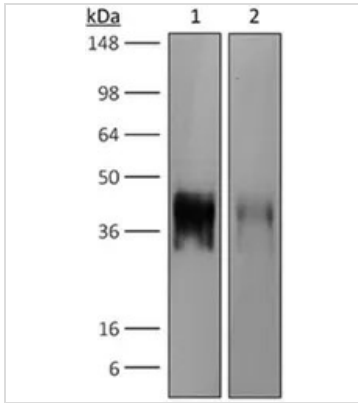
For full product information, images and publications, please visit our [website](#).

For laboratory research use only. Not for any clinical, therapeutic, or diagnostic use in humans or animals. Not for animal or human consumption.

Note

Purchasers shall not, and agree not to enable third parties to, analyze, copy, reverse engineer or otherwise attempt to determine the structure or sequence of the product.

DATA IMAGES

**GTX14010 WB Image**

WB analysis of purified PD1 recombinant protein using GTX14010 PD1 antibody [J43].

Lane 1 : 4 ug reduced purified mouse PD-1 with histidine tag at C-terminus

Lane 2 : 2 ug reduced purified mouse PD-1 with histidine tag at C-terminus

Dilution : 8 ug/ml



For full product information, images and publications, please visit our [website](#).