

CD8 alpha antibody [2.43]

Cat. No. GTX14075

Host	Rat
Clonality	Monoclonal
Isotype	IgG2b
Applications	WB, Depletion
Reactivity	Mouse

Package
500 µg

Applications

Application Note

*Optimal dilutions/concentrations should be determined by the researcher.

Suggested dilution	Recommended dilution
WB	Assay dependent
Depletion	Assay dependent

Note : in vivo CD8+ T cell depletion

Not tested in other applications.

Calculated MW 27 kDa. ([Note](#))

Properties

Form	Liquid
Buffer	Filter-sterilized PBS
Preservative	No preservatives
Storage	Store as concentrated solution. Centrifuge briefly prior to opening vial. Store at 4°C. DO NOT FREEZE.
Concentration	Batch dependent (Please refer to the vial label for the specific concentration.)
Immunogen	Mouse CTL clone L3
Purification	Protein G purified From tissue culture supernatant
Purity	>95% (Determined by SDS-PAGE)
Endotoxin	< 0.002 EU/µg (Determined by LAL assay)
Conjugation	Unconjugated

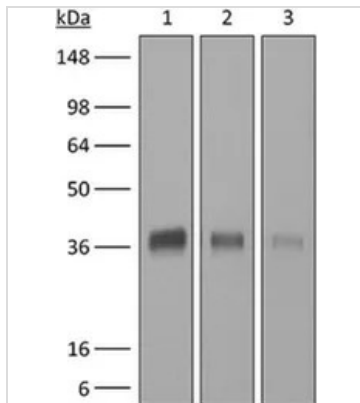
For full product information, images and publications, please visit our [website](#).

For laboratory research use only. Not for any clinical, therapeutic, or diagnostic use in humans or animals. Not for animal or human consumption.

Note

Purchasers shall not, and agree not to enable third parties to, analyze, copy, reverse engineer or otherwise attempt to determine the structure or sequence of the product.

DATA IMAGES



GTX14075 WB Image

WB analysis of purified CD8 alpha recombinant protein using GTX14075 CD8 alpha antibody [2.43].

Lane 1 : 1 ug reduced purified mouse CD8α with histidine tag at C-terminus

Lane 2 : 0.5 ug reduced purified mouse CD8α with histidine tag at C-terminus

Lane 3 : 0.25 ug reduced purified mouse CD8α with histidine tag at C-terminus

Dilution : 8 ug/ml



For full product information, images and publications, please visit our [website](https://www.genetex.com).