

## CD90.2 antibody [30H12]

Cat. No. GTX14089

Host	Rat
Clonality	Monoclonal
Isotype	IgG2b
Application	WB, Depletion
Reactivity	Mouse

Reference ( 1 )

Package

500 µg

## APPLICATION

## Application Note

\*Optimal dilutions/concentrations should be determined by the researcher.

Suggested dilution	Recommended dilution
WB	Assay dependent
Depletion	Assay dependent

## Note : in vitro T cell depletion

Not tested in other applications.

Calculated MW 18 kDa. ( [Note](#) )

## PROPERTIES

Form	Liquid
Buffer	Filter-sterilized PBS
Preservative	No preservative
Storage	Store as concentrated solution. Centrifuge briefly prior to opening vial. Store at 4°C. DO NOT FREEZE.
Concentration	Batch dependent (Please refer to the vial label for the specific concentration.)
Immunogen	Mouse thymus or spleen
Purification	Protein G purified From tissue culture supernatant
Purity	>95% (Determined by SDS-PAGE)
Endotoxin	< 0.002 EU/µg (Determined by LAL assay)
Conjugation	Unconjugated

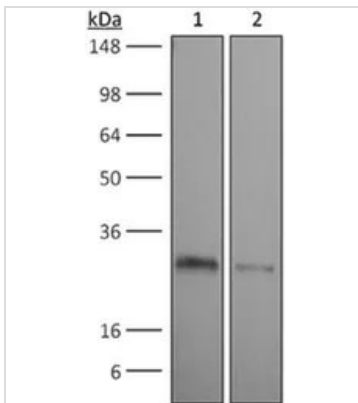


For full product information, images and publications, please visit our [website](#).

For laboratory research use only. Not for any clinical, therapeutic, or diagnostic use in humans or animals. Not for animal or human consumption.

**Note**

Purchasers shall not, and agree not to enable third parties to, analyze, copy, reverse engineer or otherwise attempt to determine the structure or sequence of the product.

**DATA IMAGES**

**GTX14089 WB Image**

WB analysis of purified CD90.2 recombinant protein using GTX14089 CD90.2 antibody [30H12].

Lane 1 : 1.6 ug reduced purified mouse Thy1.2 with histidine tag at C-terminus

Lane 2 : 0.8 ug reduced purified mouse Thy1.2 with histidine tag at C-terminus

Dilution : 15 ug/ml



For full product information, images and publications, please visit our [website](https://www.genetex.com).