

14-3-3 sigma antibody [1.T.28]

Cat. No. GTX14122

Host	Mouse
Clonality	Monoclonal
Isotype	IgG1
Applications	WB, IP
Reactivity	Human, Mouse, Rat

Package

50 µg

Applications

Application Note

*Optimal dilutions/concentrations should be determined by the researcher.

Suggested dilution	Recommended dilution
WB	0.5-2µg/ml (EGF-stimulated A431 cell)
IP	Assay dependent

Not tested in other applications.

Calculated MW 28 kDa. ([Note](#))

Product Note Recognizes human 14-3-3 sigma, Mr 30kD. Does not crossreact with other 14-3-3 isoforms.

Properties

Form	Liquid
Buffer	PBS
Preservative	0.07% Sodium azide
Storage	Store as concentrated solution. Centrifuge briefly prior to opening vial. For short-term storage (1-2 weeks), store at 4°C. For long-term storage, aliquot and store at -20°C or below. Avoid multiple freeze-thaw cycles.
Concentration	Batch dependent (Please refer to the vial label for the specific concentration.)
Immunogen	GST fusion protein corresponding to full-length human 14-3-3 sigma
Purification	Protein G purified
Conjugation	Unconjugated

Note

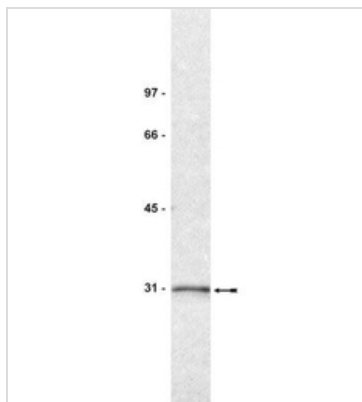
For laboratory research use only. Not for any clinical, therapeutic, or diagnostic use in humans or animals. Not for animal or human consumption.

Purchasers shall not, and agree not to enable third parties to, analyze, copy, reverse engineer or otherwise attempt to determine the structure or sequence of the product.



For full product information, images and publications, please visit our [website](#).

DATA IMAGES



GTX14122 WB Image

WB analysis of A431 cell lysate using GTX14122 14-3-3 sigma antibody [1.T.28].

Dilution : 0.5µg/ml



For full product information, images and publications, please visit our [website](#).