

14-3-3 (phospho Ser) antibody [3i2(4E2)]

Cat. No. GTX14126

Host	Mouse
Clonality	Monoclonal
Isotype	IgG1
Applications	WB, IP, ELISA
Reactivity	Human, Zebrafish

References (1)

Package

50 µl

Applications

Application Note

*Optimal dilutions/concentrations should be determined by the researcher.

Suggested dilution	Recommended dilution
WB	1:4000
IP	1:20
ELISA	1:1000

Not tested in other applications.

Product Note

Recognizes peptides/proteins containing phospho-Ser surrounded by Pro at the +2 position and Arg/Lys at the -3 position. By ELISA, recognizes a wide range of peptides containing this phosphorylated 14-3-3 binding motif in a manner that is phospho-specific and largely independent of the surrounding amino acid sequence. Weakly crossreacts with sequences containing phospho-Thr instead of phospho-Ser in this motif and with sequences containing phospho-Ser surrounded by Phe at the +1 position and Arg/Lys at the -3 position. No crossreactivity is observed with corresponding nonphosphorylated sequences.

Properties

Form	Liquid
Buffer	10mM Sodium HEPES, 150mM NaCl, 0.01% BSA, 50% Glycerol
Preservative	0.02% Sodium azide
Storage	Store as concentrated solution. Centrifuge briefly prior to opening vial. For short-term storage (1-2 weeks), store at 4°C. For long-term storage, aliquot and store at -20°C or below. Avoid multiple freeze-thaw cycles.
Immunogen	Synthetic phospho-(Ser) 14-3-3 binding motif peptides (KLH).
Purification	Unpurified
Conjugation	Unconjugated



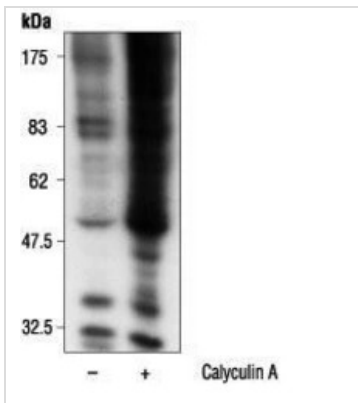
For full product information, images and publications, please visit our [website](#).

For laboratory research use only. Not for any clinical, therapeutic, or diagnostic use in humans or animals. Not for animal or human consumption.

Note

Purchasers shall not, and agree not to enable third parties to, analyze, copy, reverse engineer or otherwise attempt to determine the structure or sequence of the product.

DATA IMAGES



GTX14126 WB Image

WB analysis of calyculin A treated or untreated A431 cells using GTX14126 14-3-3 (phospho Ser) antibody [3i2(4E2)].



For full product information, images and publications, please visit our [website](#).