

Actin antibody [2Q1055]

Cat. No. GTX14128

Host	Mouse
Clonality	Monoclonal
Isotype	IgG2b
Applications	WB, ICC/IF, IHC
Reactivity	Human, Mouse, Rat

Package
50 µg

Applications

Application Note

*Optimal dilutions/concentrations should be determined by the researcher.

Suggested dilution	Recommended dilution
WB	1:5000
ICC/IF	1:500
IHC	Assay dependent

Not tested in other applications.

Product Note

Recognizes all six isoforms of vertebrate actin, globular (G) and filamentous (F) forms. This clone is a pan-actin antibody that binds to an epitope in a highly conserved region of actin. Labels myotubes and stains myoblasts and fibroblasts. Does not interfere with actin polymerization to form filaments, at a ratio as high as one antibody per two actin monomers.

Properties

Form	Liquid
Buffer	100mM Tris-Glycine, 150mM NaCl
Preservative	0.05% Sodium azide
Storage	Store as concentrated solution. Centrifuge briefly prior to opening vial. Store at 4°C. DO NOT FREEZE.
Concentration	Batch dependent (Please refer to the vial label for the specific concentration.)
Immunogen	Purified chicken gizzard actin. Epitope: Appears to be located in the N-terminal two thirds of the actin molecule, possibly near aa50-70.
Purification	Protein G purified
Conjugation	Unconjugated



For full product information, images and publications, please visit our [website](#).

For laboratory research use only. Not for any clinical, therapeutic, or diagnostic use in humans or animals. Not for animal or human consumption.

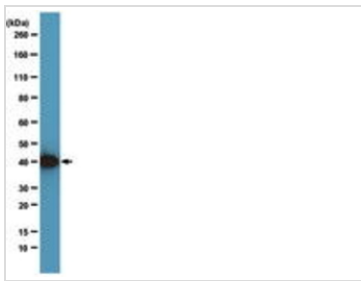
Note

Purchasers shall not, and agree not to enable third parties to, analyze, copy, reverse engineer or otherwise attempt to determine the structure or sequence of the product.

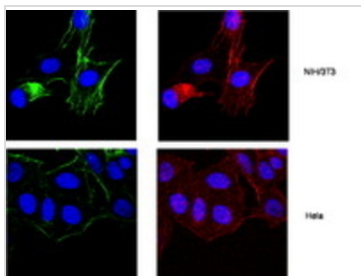
DATA IMAGES

**GTX14128 IHC Image**

IHC analysis of rat hippocampus tissue using GTX14128 Actin antibody [2Q1055].

**GTX14128 WB Image**

WB analysis of HEK293 cell lysate using GTX14128 Actin antibody [2Q1055].

**GTX14128 ICC/IF Image**

ICC/IF analysis of HeLa and NIH3T3 cells using GTX14128 Actin antibody [2Q1055].

Red : Primary antibody

Green : Phalloidin

Blue : DAPI



For full product information, images and publications, please visit our [website](#).