

CTLA4 antibody [9D9]

Cat. No. GTX14132

Host	Mouse
Clonality	Monoclonal
Isotype	IgG2b
Applications	WB, Neutralizing/Inhibition
Reactivity	Mouse

Package
500 µg

Applications

Application Note

*Optimal dilutions/concentrations should be determined by the researcher.

Suggested dilution	Recommended dilution
WB	Assay dependent
Neutralizing/Inhibition	Assay dependent

Not tested in other applications.

Calculated MW 25 kDa. ([Note](#))

Properties

Form	Liquid
Buffer	Filter-sterilized PBS
Preservative	No preservatives
Storage	Store as concentrated solution. Centrifuge briefly prior to opening vial. Store at 4°C. DO NOT FREEZE.
Concentration	Batch dependent (Please refer to the vial label for the specific concentration.)
Purification	Protein A purified From tissue culture supernatant
Purity	>95% (Determined by SDS-PAGE)
Endotoxin	< 0.002 EU/µg (Determined by LAL assay)
Conjugation	Unconjugated

Note

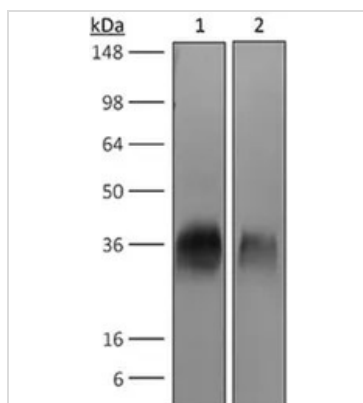
For laboratory research use only. Not for any clinical, therapeutic, or diagnostic use in humans or animals. Not for animal or human consumption.

Purchasers shall not, and agree not to enable third parties to, analyze, copy, reverse engineer or otherwise attempt to determine the structure or sequence of the product.



For full product information, images and publications, please visit our [website](#).

DATA IMAGES



GTX14132 WB Image

WB analysis of purified CTLA4 recombinant protein using GTX14132 CTLA4 antibody [9D9].

Lane 1 : 1 ug reduced purified mouse CTLA-4 with histidine tag at C-terminus

Lane 2 : 0.5 ug reduced purified mouse CTLA-4 with histidine tag at C-terminus

Dilution : 8 ug/ml



For full product information, images and publications, please visit our [website](#).