

TCP1 alpha antibody [4E215]

Cat. No. GTX14136

Host	Rat
Clonality	Monoclonal
Isotype	IgG2c
Applications	WB, ICC/IF, IP, IHC
Reactivity	Human, Mouse, Rat, Rabbit, Sheep, Dog, Hamster, Chicken

Package
100 µg

Applications

Application Note

*Optimal dilutions/concentrations should be determined by the researcher.

Suggested dilution	Recommended dilution
WB	1:1000
ICC/IF	Assay dependent
IP	Assay dependent
IHC	Assay dependent

Not tested in other applications.

Properties

Form	Liquid
Buffer	PBS, 50% Glycerol
Preservative	0.09% Sodium azide
Storage	Store as concentrated solution. Centrifuge briefly prior to opening vial. For short-term storage (1-2 weeks), store at 4°C. For long-term storage, aliquot and store at -20°C or below. Avoid multiple freeze-thaw cycles.
Concentration	Batch dependent (Please refer to the vial label for the specific concentration.)
Immunogen	Recombinant protein corresponding to mouse TCP-1alpha (C-terminal fragment)
Purification	Protein G purified
Conjugation	Unconjugated

Note

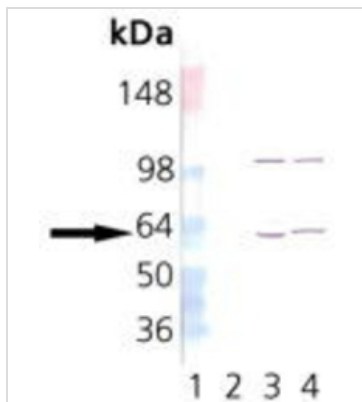
For laboratory research use only. Not for any clinical, therapeutic, or diagnostic use in humans or animals. Not for animal or human consumption.

Purchasers shall not, and agree not to enable third parties to, analyze, copy, reverse engineer or otherwise attempt to determine the structure or sequence of the product.



For full product information, images and publications, please visit our [website](#).

DATA IMAGES



GTX14136 WB Image

WB analysis of various samples using GTX14136 TCP1 alpha antibody [4E215].

Lane 1 : MW marker

Lane 2 : Hsp60 Recombinant Human Protein

Lane 3 : 3T3 Heat Shocked

Lane 4: PC-12 Heat Shocked



For full product information, images and publications, please visit our [website](#).