

## TCP1 beta antibody [4E217]

Cat. No. GTX14137

Host	Rat
Clonality	Monoclonal
Isotype	IgG2b
Applications	WB, IHC-P
Reactivity	Human, Mouse, Rat, Rabbit, Sheep, Bovine, Dog, Hamster, Chicken, Pig, Monkey

## Package

50 µg

## Applications

## Application Note

\*Optimal dilutions/concentrations should be determined by the researcher.

Suggested dilution	Recommended dilution
WB	1µg/ml
IHC-P	Assay dependent

Not tested in other applications.

Calculated MW 57 kDa. ( [Note](#) )

## Properties

Form	Liquid
Buffer	PBS, 0.1mM PMSF
Preservative	No preservatives
Storage	Store as concentrated solution. Centrifuge briefly prior to opening vial. For short-term storage (1-2 weeks), store at 4°C. For long-term storage, aliquot and store at -20°C or below. Avoid multiple freeze-thaw cycles.
Concentration	Batch dependent (Please refer to the vial label for the specific concentration.)
Immunogen	Mouse CCT beta peptide-PPD conjugate.
Purification	Protein G purified
Conjugation	Unconjugated

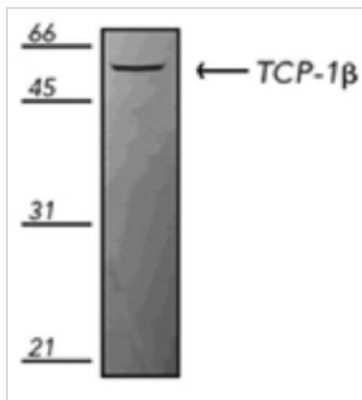
## Note

For laboratory research use only. Not for any clinical, therapeutic, or diagnostic use in humans or animals. Not for animal or human consumption.

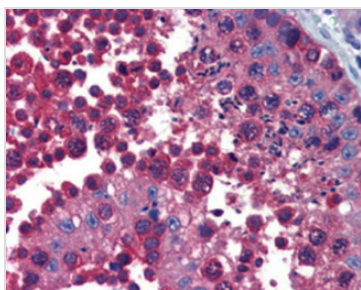
Purchasers shall not, and agree not to enable third parties to, analyze, copy, reverse engineer or otherwise attempt to determine the structure or sequence of the product.



For full product information, images and publications, please visit our [website](#).

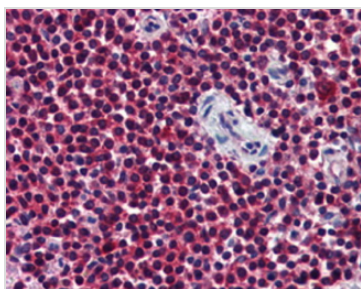
**DATA IMAGES**

**GTX14137 WB Image**

WB analysis of Jurkat cell lysate using GTX14137 TCP1 beta antibody [4E217].


**GTX14137 IHC-P Image**

IHC-P analysis of human testis tissue using GTX14137 TCP1 beta antibody [4E217].

Dilution : 10μg/ml


**GTX14137 IHC-P Image**

IHC-P analysis of human spleen tissue using GTX14137 TCP1 beta antibody [4E217].

Dilution : 10μg/ml



For full product information, images and publications, please visit our [website](https://www.genetex.com).