

Melanoma antibody [HMB45+A103+T311]

Cat. No. GTX14203

Host	Mouse
Clonality	Multiclonal
Isotype	IgG1, IgG2a
Applications	IHC-P
Reactivity	Human

Package
200 µl

Applications

Application Note

*Optimal dilutions/concentrations should be determined by the researcher.

Suggested dilution	Recommended dilution
IHC-P	1:25-1:50

Note : Recommendations for antigen retrieval : Citrate Buffer pH 6.0

Not tested in other applications.

Product Note

The HMB45 clone reacts with a neuraminidase-sensitive oligosaccharide side chain of a glycoconjugate present in immature melanosomes. Clone A103 recognizes a protein of 20 kDa, identified as MART-1 (melanoma antigen recognized by T cells-1) or Melan-A. Tyrosinase is a key enzyme involved in the initial stages of melanin biosynthesis. The combination of HMB45, MART-1 and tyrosinase make this triple antibody cocktail a first-order pan melanoma screener.

Properties

Form	Liquid
Buffer	PBS
Preservative	0.09% Sodium azide
Storage	Store as concentrated solution. Centrifuge briefly prior to opening vial. Store at 4°C.
Concentration	Batch dependent (Please refer to the vial label for the specific concentration.)
Immunogen	Pigmented melanoma metastases from lymph nodes (HMB45). Recombinant human MART-1 protein (A103). Recombinant tyrosinase protein T311.
Purification	Purified IgG
Conjugation	Unconjugated

Note

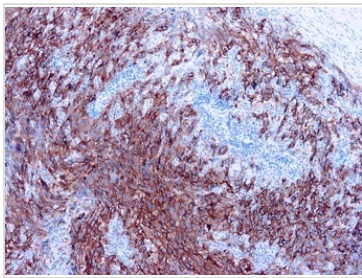
For laboratory research use only. Not for any clinical, therapeutic, or diagnostic use in humans or animals. Not for animal or human consumption.

Purchasers shall not, and agree not to enable third parties to, analyze, copy, reverse engineer or otherwise attempt to determine the structure or sequence of the product.



For full product information, images and publications, please visit our [website](#).

DATA IMAGES

**GTX14203 IHC-P Image**

IHC-P analysis of human metastatic melanoma in lymph node tissue using GTX14203 Melanoma antibody [HMB45+A103+T311].



For full product information, images and publications, please visit our [website](#).