

MLH1 antibody [G168-15]

Cat. No. GTX14206

Host	Mouse
Clonality	Monoclonal
Isotype	IgG1
Applications	IHC-P
Reactivity	Human

Package
500 µl

Applications

Application Note

*Optimal dilutions/concentrations should be determined by the researcher.

Suggested dilution	Recommended dilution
IHC-P	1:25-1:50

Note : Recommendations for antigen retrieval : EDTA buffer pH 8.0

Not tested in other applications.

Properties

Form	Liquid
Buffer	Tissue culture supernatant
Preservative	0.09% Sodium azide
Storage	Store as concentrated solution. Centrifuge briefly prior to opening vial. Store at 4°C.
Immunogen	Full length recombinant MLH.
Purification	Unpurified
Conjugation	Unconjugated

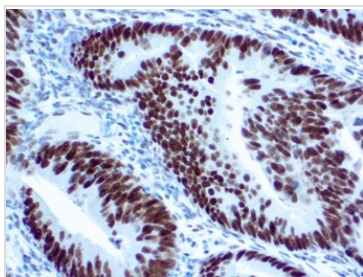
Note

For laboratory research use only. Not for any clinical, therapeutic, or diagnostic use in humans or animals. Not for animal or human consumption.

Purchasers shall not, and agree not to enable third parties to, analyze, copy, reverse engineer or otherwise attempt to determine the structure or sequence of the product.



For full product information, images and publications, please visit our [website](#).

DATA IMAGES

GTX14206 IHC-P Image

IHC-P analysis of human colon carcinoma tissue using GTX14206 MLH1 antibody [G168-15].



For full product information, images and publications, please visit our [website](#).