

PLK1 antibody [Mixed clones]

Cat. No. GTX14210

Host	Mouse
Clonality	Monoclonal
Isotype	IgG1, IgG2b
Application	WB, ICC/IF, IHC-P, FACS, IP, ELISA
Reactivity	Human, Mouse, Rat, Monkey, Xenopus

Package

50 µg

APPLICATION

Application Note

*Optimal dilutions/concentrations should be determined by the researcher.

Suggested dilution	Recommended dilution
WB	1-2µg/ml
ICC/IF	1-5µg/ml
IHC-P	1:50-1:100
FACS	3-5µg/ 10 ⁶ cells
IP	5µg
ELISA	0.1-1µg/ml

Not tested in other applications.

Calculated MW 68 kDa. ([Note](#))

PROPERTIES

Form	Liquid
Buffer	PBS
Preservative	0.09% Sodium azide
Storage	Store as concentrated solution. Centrifuge briefly prior to opening vial. For short-term storage (1-2 weeks), store at 4°C. For long-term storage, aliquot and store at -20°C or below. Avoid multiple freeze-thaw cycles.
Concentration	Batch dependent (Please refer to the vial label for the specific concentration.)
Immunogen	A His-tagged Plk fusion protein (C-term Plk1) corresponding to aa402-603 of the human Plk1 protein.
Purification	Protein A purified
Conjugation	Unconjugated



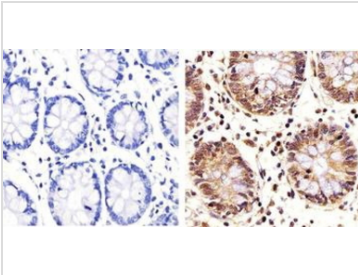
For full product information, images and publications, please visit our [website](#).

Date 2024 / 05 / 07 Page 1 of 2

For laboratory research use only. Not for any clinical, therapeutic, or diagnostic use in humans or animals. Not for animal or human consumption.

Note

Purchasers shall not, and agree not to enable third parties to, analyze, copy, reverse engineer or otherwise attempt to determine the structure or sequence of the product.

DATA IMAGES

GTX14210 IHC-P Image

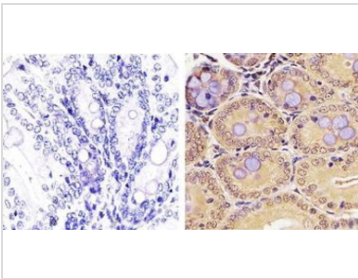
IHC-P analysis of human colon tissue using GTX14210 PLK1 antibody [Mixed clones].

Right : Primary antibody

Left : Negative control without primary antibody

Antigen retrieval : 10mM sodium citrate (pH 6.0), microwaved for 8-15 min

Dilution : 1:20


GTX14210 IHC-P Image

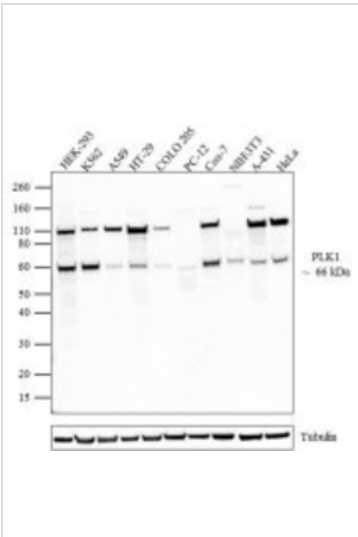
IHC-P analysis of mouse colon tissue using GTX14210 PLK1 antibody [Mixed clones].

Right : Primary antibody

Left : Negative control without primary antibody

Antigen retrieval : 10mM sodium citrate (pH 6.0), microwaved for 8-15 min

Dilution : 1:50


GTX14210 WB Image

WB analysis of various samples using GTX14210 PLK1 antibody [Mixed clones].

Lane1 : HEK-293

Lane2 : K562

Lane3 : A549

Lane4 : HT-29

Lane5 : COLO 205

Lane6 : PC-12

Lane7 : Cos-7

Lane8 : NIH3T3

Lane9 : A-431

Lane10 : HeLa

Loading : 20µg

Dilution : 1-2µg/ml



For full product information, images and publications, please visit our [website](https://www.genetex.com).