

CD8 antibody [YTS 169.4]

Cat. No. GTX14216

Host	Rat
Clonality	Monoclonal
Isotype	IgG2b
Applications	WB, Depletion
Reactivity	Mouse

Package
500 µg

Applications

Application Note

*Optimal dilutions/concentrations should be determined by the researcher.

Suggested dilution	Recommended dilution
WB	Assay dependent
Depletion	Assay dependent

Note : in vivo CD8+ T cell depletion

Not tested in other applications.

Calculated MW 27 kDa. ([Note](#))

Properties

Form	Liquid
Buffer	Filter-sterilized PBS
Preservative	No preservatives
Storage	Store as concentrated solution. Centrifuge briefly prior to opening vial. Store at 4°C. DO NOT FREEZE.
Concentration	Batch dependent (Please refer to the vial label for the specific concentration.)
Immunogen	CBA mouse thymocytes
Purification	Protein G purified From tissue culture supernatant
Purity	>95% (Determined by SDS-PAGE)
Endotoxin	< 0.002 EU/µg (Determined by LAL assay)
Conjugation	Unconjugated



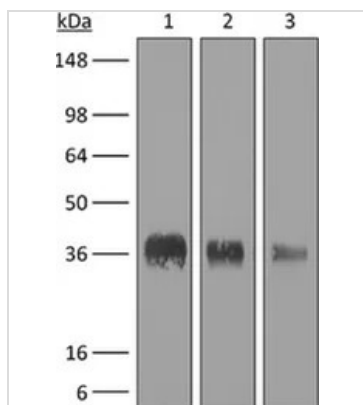
For full product information, images and publications, please visit our [website](#).

For laboratory research use only. Not for any clinical, therapeutic, or diagnostic use in humans or animals. Not for animal or human consumption.

Note

Purchasers shall not, and agree not to enable third parties to, analyze, copy, reverse engineer or otherwise attempt to determine the structure or sequence of the product.

DATA IMAGES

**GTX14216 WB Image**

WB analysis of purified CD8 recombinant protein using GTX14216 CD8 antibody [YTS 169.4].

Lane 1 : 1 ug reduced purified mouse CD8 α with histidine tag at C-terminus

Lane 2 : 0.5 ug reduced purified mouse CD8 α with histidine tag at C-terminus

Lane 3 : 0.25 ug reduced purified mouse CD8 α with histidine tag at C-terminus

Dilution : 8 ug/ml



For full product information, images and publications, please visit our [website](#).