

Caspase 1 antibody [14F468]

Cat. No. GTX14367

Host	Mouse
Clonality	Monoclonal
Isotype	IgG1
Applications	WB, IHC-P, FCM
Reactivity	Human, Mouse, Rat

References (8)

Package

50 µg

Applications

Application Note

*Optimal dilutions/concentrations should be determined by the researcher.

Suggested dilution	Recommended dilution
WB	0.5 - 2 µg/ml
IHC-P	1:10 - 1:500
FCM	Assay dependent

Not tested in other applications.

Calculated MW 45 kDa. ([Note](#))

Product Note The antibody will recognize full-length Caspase-1 and cleaved caspase-1 forms that retain amino acids 371-390 of the Caspase-1 protein.

Properties

Form	Liquid
Buffer	PBS
Preservative	0.05% Sodium azide
Storage	Store as concentrated solution. Centrifuge briefly prior to opening vial. For short-term storage (1-2 weeks), store at 4°C. For long-term storage, aliquot and store at -20°C or below. Avoid multiple freeze-thaw cycles.
Concentration	1 mg/ml (Please refer to the vial label for the specific concentration.)
Immunogen	A synthetic peptide corresponding to amino acids 371-390 RKVRFSEQPDGRAQMPTE of human caspase-1 was used as immunogen.
Purification	Protein G purified
Conjugation	Unconjugated

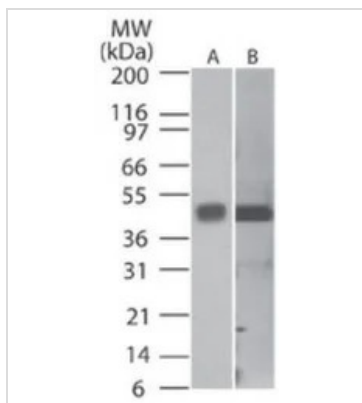


For full product information, images and publications, please visit our [website](#).

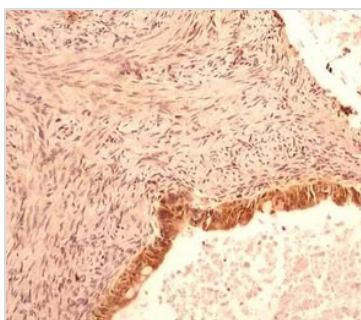
For laboratory research use only. Not for any clinical, therapeutic, or diagnostic use in humans or animals. Not for animal or human consumption.

Note

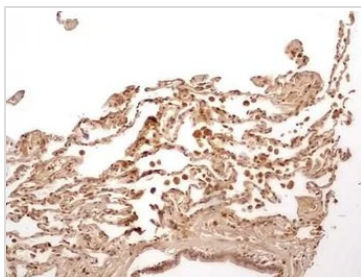
Purchasers shall not, and agree not to enable third parties to, analyze, copy, reverse engineer or otherwise attempt to determine the structure or sequence of the product.

DATA IMAGES

GTX14367 WB Image

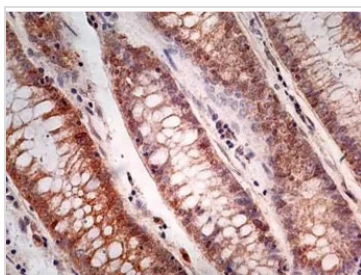
WB analysis of HeLa (A) and NIH-3T3 (B) cell lysate using GTX14367 Caspase 1 antibody [14F468].
Dilution : 0.5 µg/ml and 2 µg/ml


GTX14367 IHC-P Image

IHC-P analysis of human ovarian carcinoma tissue using GTX14367 Caspase 1 antibody [14F468].
Dilution : 5 µg/ml


GTX14367 IHC-P Image

IHC-P analysis of human lung tissue using GTX14367 Caspase 1 antibody [14F468].
Dilution : 5 µg/ml


GTX14367 IHC-P Image

IHC-P analysis of human rectum adenocarcinoma tissue using GTX14367 Caspase 1 antibody [14F468].
Dilution : 5 µg/ml
Antigen retrieval : 10 mM sodium citrate buffer, pH 6.0



For full product information, images and publications, please visit our [website](https://www.genetex.com).