

Caspase 1 antibody

Cat. No. GTX14368

Host	Rabbit
Clonality	Polyclonal
Isotype	IgG
Applications	WB, IHC-P
Reactivity	Human, Mouse, Rat

References (1)

Package

50 µg

Applications

Application Note

*Optimal dilutions/concentrations should be determined by the researcher.

Suggested dilution	Recommended dilution
WB	0.5 - 2 µg/ml
IHC-P	5 µg/ml

Not tested in other applications.

Calculated MW 45 kDa. ([Note](#))

Product Note The antibody recognizes full-length Caspase-1. The antibody also recognizes cleaved Caspase-1 forms that include amino acids 31-45.

Properties

Form	Liquid
Buffer	PBS
Preservative	0.05% Sodium azide
Storage	Store as concentrated solution. Centrifuge briefly prior to opening vial. For short-term storage (1-2 weeks), store at 4°C. For long-term storage, aliquot and store at -20°C or below. Avoid multiple freeze-thaw cycles.
Concentration	1 mg/ml (Please refer to the vial label for the specific concentration.)
Immunogen	A synthetic peptide corresponding to amino acids 371-390 RQVRFSEQPDGRAQMPTE of human Caspase-1.
Purification	Protein G purified
Conjugation	Unconjugated

Note

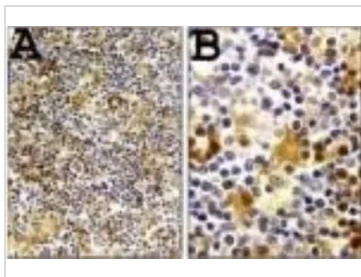
For laboratory research use only. Not for any clinical, therapeutic, or diagnostic use in humans or animals. Not for animal or human consumption.

Purchasers shall not, and agree not to enable third parties to, analyze, copy, reverse engineer or otherwise attempt to determine the structure or sequence of the product.



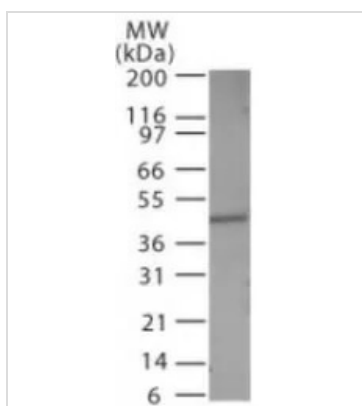
For full product information, images and publications, please visit our [website](#).

DATA IMAGES



GTX14368 IHC-P Image

IHC-P analysis of human reactive lymph node tissue using GTX14368 Caspase 1 antibody. B is a higher magnification of A. Staining in macrophages is observed.



GTX14368 WB Image

WB analysis of HeLa cell lysate using GTX14368 Caspase 1 antibody.
Dilution : 0.5µg/ml



For full product information, images and publications, please visit our [website](https://www.genetex.com).