

# Ubiquitin antibody

**Cat. No. GTX14372**

<b>Host</b>	Rabbit
<b>Clonality</b>	Polyclonal
<b>Isotype</b>	IgG
<b>Applications</b>	WB, ELISA, IHC
<b>Reactivity</b>	Species independent

**Package**  
250 µg

## Applications

### Application Note

\*Optimal dilutions/concentrations should be determined by the researcher.

Suggested dilution	Recommended dilution
WB	1:200-1:1000
ELISA	1:1000-1:5000
IHC	Assay dependent

Not tested in other applications.

## Properties

<b>Form</b>	Liquid
<b>Buffer</b>	20mM Potassium Phosphate, 150mM NaCl
<b>Preservative</b>	0.01% Sodium azide
<b>Storage</b>	Store as concentrated solution. Centrifuge briefly prior to opening vial. For short-term storage (1-2 weeks), store at 4°C. For long-term storage, aliquot and store at -20°C or below. Avoid multiple freeze-thaw cycles.
<b>Concentration</b>	5 mg/ml (Please refer to the vial label for the specific concentration.)
<b>Immunogen</b>	Ubiquitin coupled to rabbit IgG using glutaraldehyde.
<b>Purification</b>	IgG fraction This product is an IgG fraction antibody purified from monospecific antiserum by a multi-step process which includes delipidation, salt fractionation and ion exchange chromatography followed by extensive dialysis against the buffer stated above.
<b>Conjugation</b>	Unconjugated
<b>Note</b>	For laboratory research use only. Not for any clinical, therapeutic, or diagnostic use in humans or animals. Not for animal or human consumption.  Purchasers shall not, and agree not to enable third parties to, analyze, copy, reverse engineer or otherwise attempt to determine the structure or sequence of the product.



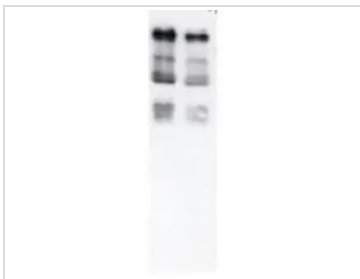
For full product information, images and publications, please visit our [website](#).

## DATA IMAGES



### GTX14372 WB Image

Western blot of Ubiquitin. Anti-Ubiquitin antibody (GTX14372), generated by immunization with Ubiquitin coupled to Rabbit IgG, was tested by western blot against total cell extract from yeast. Dilution of the antibody between 1:200 and 1:1,000 showed strong reactivity with Ubiquitinated proteins. In this blot the antibody was used at a 1:500 dilution incubated overnight at 4° C in 5% non-fat dry milk in TBST. Detection occurred using a 1:2,000 dilution of HRP-labeled Donkey anti-Rabbit IgG for 1 hour at room temperature.



### GTX14372 WB Image

WB analysis of yeast whole cell lysate using GTX14372 Ubiquitin antibody.  
Dilution : 1:500



For full product information, images and publications, please visit our [website](#).