

## Dynamamin 1 antibody [4E67]

**Cat. No. GTX14448**

<b>Host</b>	Mouse
<b>Clonality</b>	Monoclonal
<b>Isotype</b>	IgG1
<b>Applications</b>	WB, FCM, IP, IHC
<b>Reactivity</b>	Human, Mouse, Rat, Bovine, Chicken

**Package**  
50 µg

## Applications

**Application Note**

\*Optimal dilutions/concentrations should be determined by the researcher.

Suggested dilution	Recommended dilution
WB	0.5µg/ml
FCM	10µg/ml
IP	Assay dependent
IHC	1:50

Not tested in other applications.

**Calculated MW** 97 kDa. ([Note](#))

## Properties

<b>Form</b>	Liquid
<b>Buffer</b>	PBS, 0.1mM PMSF, 50% Glycerol
<b>Preservative</b>	No preservatives
<b>Storage</b>	Store as concentrated solution. Centrifuge briefly prior to opening vial. For short-term storage (1-2 weeks), store at 4°C. For long-term storage, aliquot and store at -20°C or below. Avoid multiple freeze-thaw cycles.
<b>Concentration</b>	Batch dependent (Please refer to the vial label for the specific concentration.)
<b>Immunogen</b>	Recombinant His 6-tagged human dynamamin (aa1-750). Epitope: GNRGMEDIPLVNRLQD.
<b>Purification</b>	Protein G purified
<b>Conjugation</b>	Unconjugated

**Note**

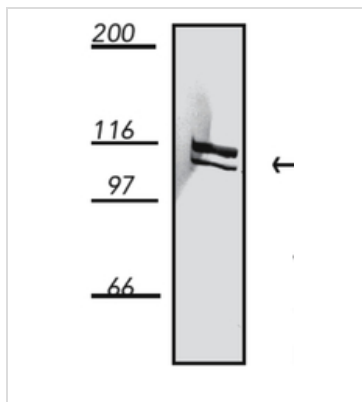
For laboratory research use only. Not for any clinical, therapeutic, or diagnostic use in humans or animals. Not for animal or human consumption.

Purchasers shall not, and agree not to enable third parties to, analyze, copy, reverse engineer or otherwise attempt to determine the structure or sequence of the product.



For full product information, images and publications, please visit our [website](#).

## DATA IMAGES

**GTX14448 WB Image**

WB analysis of SL29 cell lysate using GTX14448 Dynamin 1 antibody [4E67].



For full product information, images and publications, please visit our [website](#).