

Galectin 4 antibody [3G152]

Cat. No. GTX14477

Host	Mouse
Clonality	Monoclonal
Isotype	IgG1
Applications	WB, ICC/IF, IP, ELISA
Reactivity	Yeast

Package
100 µg

Applications

Application Note

*Optimal dilutions/concentrations should be determined by the researcher.

Suggested dilution	Recommended dilution
WB	Assay dependent
ICC/IF	1:50-1:100
IP	Assay dependent
ELISA	Assay dependent

Not tested in other applications.

Calculated MW 99 kDa. ([Note](#))**Product Note** Specific for the DNA binding domain of the *S. cerevisiae* GAL4 protein. The immunoreactive epitope maps within aa1-92 of GAL4.

Properties

Form	Liquid
Buffer	PBS
Preservative	0.09% Sodium azide
Storage	Store as concentrated solution. Centrifuge briefly prior to opening vial. For short-term storage (1-2 weeks), store at 4°C. For long-term storage, aliquot and store at -20°C or below. Avoid multiple freeze-thaw cycles.
Concentration	Batch dependent (Please refer to the vial label for the specific concentration.)
Immunogen	Recombinant protein corresponding to aa1-147 mapping within the N-terminal, DNA binding domain of GAL4.
Purification	Protein A purified
Conjugation	Unconjugated



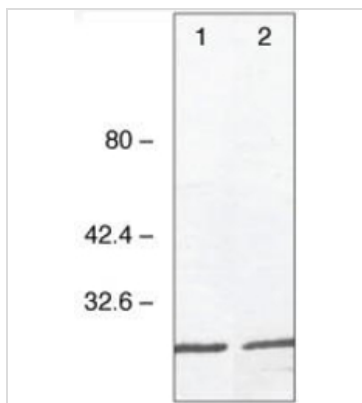
For full product information, images and publications, please visit our [website](#).

For laboratory research use only. Not for any clinical, therapeutic, or diagnostic use in humans or animals. Not for animal or human consumption.

Note

Purchasers shall not, and agree not to enable third parties to, analyze, copy, reverse engineer or otherwise attempt to determine the structure or sequence of the product.

DATA IMAGES



GTX14477 WB Image

WB analysis of various samples using GTX14477 Galectin 4 antibody [3G152].

Lane 1 : GAL4VP16 C-terminal fusion protein

Lane 2 : GAL4VP16 N-terminal fusion protein



For full product information, images and publications, please visit our [website](#).