

# A2B5 antibody [105]

**Cat. No. GTX14538**

<b>Host</b>	Mouse
<b>Clonality</b>	Monoclonal
<b>Isotype</b>	IgM
<b>Applications</b>	ICC/IF
<b>Reactivity</b>	Human, Mouse, Rat

**Package**  
50 µg

## Applications

### Application Note

\*Optimal dilutions/concentrations should be determined by the researcher.

Suggested dilution	Recommended dilution
ICC/IF	5-10 µg/mL

Not tested in other applications.

## Properties

<b>Form</b>	Liquid
<b>Buffer</b>	PBS, 5% Trehalose
<b>Preservative</b>	No preservative
<b>Storage</b>	Store as concentrated solution. Centrifuge briefly prior to opening vial. For short-term storage (1-2 weeks), store at 4°C. For long-term storage, aliquot and store at -20°C or below. Avoid multiple freeze-thaw cycles.
<b>Concentration</b>	1 mg/ml (Please refer to the vial label for the specific concentration.)
<b>Immunogen</b>	embryonic chicken retinal cells
<b>Purification</b>	Purified IgM
<b>Conjugation</b>	Unconjugated

### Note

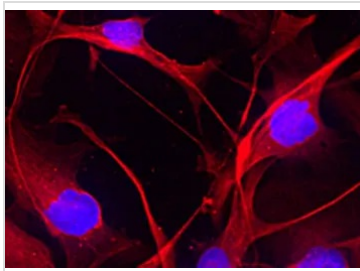
For laboratory research use only. Not for any clinical, therapeutic, or diagnostic use in humans or animals. Not for animal or human consumption.

Purchasers shall not, and agree not to enable third parties to, analyze, copy, reverse engineer or otherwise attempt to determine the structure or sequence of the product.



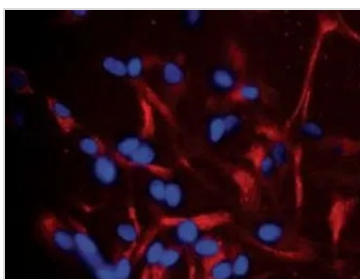
For full product information, images and publications, please visit our [website](#).

## DATA IMAGES



### GTx14538 ICC/IF Image

ICC/IF analysis of A172 Cells using GTx14538 A2B5 antibody [105].



### GTx14538 ICC/IF Image

ICC/IF analysis of human neural progenitors cells using GTx14538 A2B5 antibody [105].

Red : Primary antibody

Blue : DAPI



For full product information, images and publications, please visit our [website](#).