

M-CSF Receptor antibody [AFS98]

Cat. No. GTX14566

Host	Rat
Clonality	Monoclonal
Isotype	IgG2a
Application	WB, FACS, Depletion, Neutralizing/Inhibition
Reactivity	Human, Mouse

Reference (3)
Package
500 µg

APPLICATION

Application Note

*Optimal dilutions/concentrations should be determined by the researcher.

Suggested dilution	Recommended dilution
WB	Assay dependent
FACS	Assay dependent
Depletion	Assay dependent
Neutralizing/Inhibition	Assay dependent

Note : in vivo macrophage and monocyte depletion

Not tested in other applications.

Calculated MW 109 kDa. ([Note](#))

PROPERTIES

Form	Liquid
Buffer	Filter-sterilized PBS
Preservative	No preservative
Storage	Store as concentrated solution. Centrifuge briefly prior to opening vial. Store at 4°C. DO NOT FREEZE.
Concentration	Batch dependent (Please refer to the vial label for the specific concentration.)
Purification	Protein G purified From tissue culture supernatant
Purity	>95% (Determined by SDS-PAGE)
Endotoxin	< 0.002 EU/µg (Determined by LAL assay)
Conjugation	Unconjugated

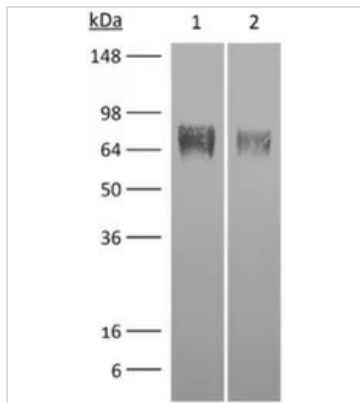


For full product information, images and publications, please visit our [website](#).

For laboratory research use only. Not for any clinical, therapeutic, or diagnostic use in humans or animals. Not for animal or human consumption.

Note

Purchasers shall not, and agree not to enable third parties to, analyze, copy, reverse engineer or otherwise attempt to determine the structure or sequence of the product.

DATA IMAGES

GTX14566 WB Image

WB analysis of purified M-CSF Receptor recombinant protein using GTX14566 M-CSF Receptor antibody [AFS98].

Lane 1 : 1 ug reduced purified mouse CD115 with histidine tag

Lane 2 : 0.5 ug reduced purified mouse CD115 with histidine tag

Dilution : 15 ug/ml



For full product information, images and publications, please visit our [website](https://www.genetex.com).