

## PDE1C antibody

Cat. No. GTX14602

<b>Host</b>	Rabbit
<b>Clonality</b>	Polyclonal
<b>Isotype</b>	IgG
<b>Applications</b>	WB, ICC/IF, IP, ELISA, IHC
<b>Reactivity</b>	Human, Mouse, Rat

References ( 2 )

Package

100 µg

## Applications

## Application Note

\*Optimal dilutions/concentrations should be determined by the researcher.

Suggested dilution	Recommended dilution
WB	1:500-1:2000
ICC/IF	1:40-1:100
IP	1:200
ELISA	1:10000
IHC	1:40-1:100

Not tested in other applications.

Calculated MW 81 kDa. ( [Note](#) )

## Product Note

This antibody does not cross-react with PDE1A, PDE1B, or other PDE family members. This antibody will label all PDE1C variants including PDE1C1, PDE1C2, and PDE1C3.

## Properties

<b>Form</b>	Liquid
<b>Buffer</b>	Tris/Glycine, 0.5% BSA, 30% Glycerol
<b>Preservative</b>	0.02% Sodium azide
<b>Storage</b>	Store as concentrated solution. Centrifuge briefly prior to opening vial. For short-term storage (1-2 weeks), store at 4°C. For long-term storage, aliquot and store at -20°C or below. Avoid multiple freeze-thaw cycles.
<b>Concentration</b>	0.5 mg/ml (Please refer to the vial label for the specific concentration.)
<b>Immunogen</b>	Synthetic peptide corresponding to unique amino acid sequence on PDE1C gene.
<b>Purification</b>	Purified by affinity chromatography
<b>Conjugation</b>	Unconjugated

For full product information, images and publications, please visit our [website](#).

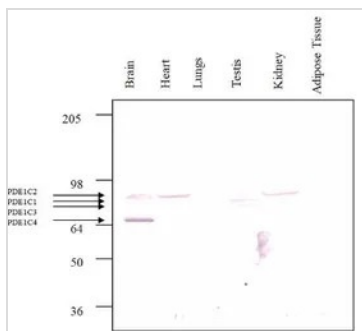
Date 2026 / 01 / 08 Page 1 of 2

For laboratory research use only. Not for any clinical, therapeutic, or diagnostic use in humans or animals. Not for animal or human consumption.

## Note

Purchasers shall not, and agree not to enable third parties to, analyze, copy, reverse engineer or otherwise attempt to determine the structure or sequence of the product.

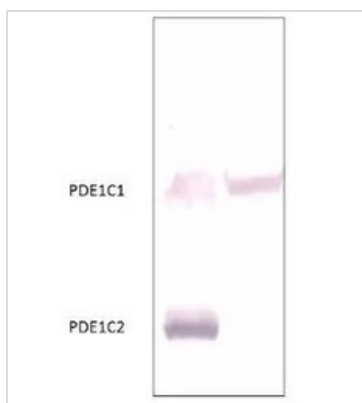
## DATA IMAGES



### GTX14602 WB Image

WB analysis of rat tissue lysates using GTX14602 PDE1C antibody.

Dilution : 1:250



### GTX14602 WB Image

WB analysis of PDE1C1 and PDE1C2 recombinant protein using GTX14602 PDE1C antibody.

Dilution : 1:500



### GTX14602 IHC Image

IHC analysis of human ovarian medulla tissue using GTX14602 PDE1C antibody.

Dilution : 1:1500



For full product information, images and publications, please visit our [website](https://www.genetex.com).