

PDE2A antibody

Cat. No. GTX14605

Host	Rabbit
Clonality	Polyclonal
Isotype	IgG
Applications	WB, ICC/IF, IHC-Wm, IP, ELISA, IHC, FRET
Reactivity	Human, Mouse, Rat, Bovine

References (1)

Package

100 µg

Applications

Application Note

*Optimal dilutions/concentrations should be determined by the researcher.

Suggested dilution	Recommended dilution
WB	1:250-1:1000
ICC/IF	1:250-1:1000
IHC-Wm	Assay dependent
IP	1:200
ELISA	1:10000
IHC	1:250-1:1000
FRET	Assay dependent

Not tested in other applications.

Calculated MW 106 kDa. ([Note](#))**Product Note** This antibody will label PDE2A1, PDE2A2, PDE2A3 and PDE2A4 variants.

Properties

Form	Liquid
Buffer	Tris/Glycine, 0.5% BSA, 30% Glycerol
Preservative	0.02% Sodium azide
Storage	Store as concentrated solution. Centrifuge briefly prior to opening vial. For short-term storage (1-2 weeks), store at 4°C. For long-term storage, aliquot and store at -20°C or below. Avoid multiple freeze-thaw cycles.
Concentration	0.7 mg/ml (Please refer to the vial label for the specific concentration.)
Immunogen	Synthetic peptide corresponding to unique C-terminal amino acid sequence on PDE2A gene.
Purification	Purified by affinity chromatography



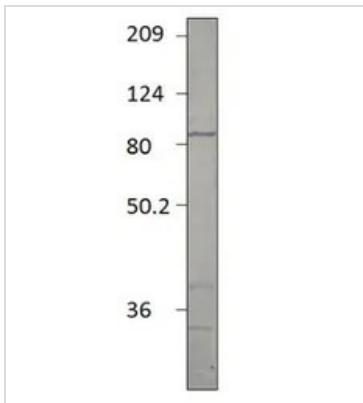
For full product information, images and publications, please visit our [website](#).

Conjugation Unconjugated

Note For laboratory research use only. Not for any clinical, therapeutic, or diagnostic use in humans or animals. Not for animal or human consumption.

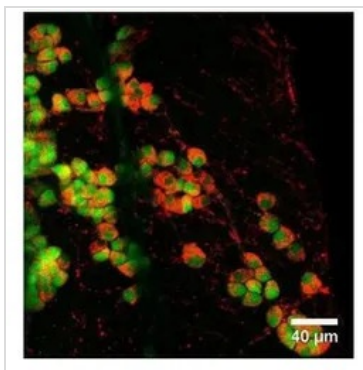
Purchasers shall not, and agree not to enable third parties to, analyze, copy, reverse engineer or otherwise attempt to determine the structure or sequence of the product.

DATA IMAGES



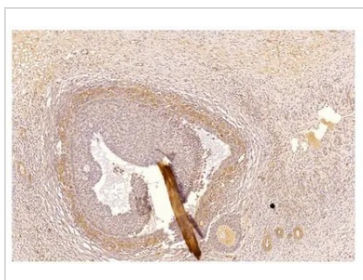
GTX14605 WB Image

WB analysis of PDE2A recombinant protein using GTX14605 PDE2A antibody.
Dilution : 1:500



GTX14605 IHC-Wm Image

IHC-Wm analysis of mouse nose tissue using GTX14605 PDE2A antibody.
Red : Primary antibody
Green : Greneberg ganglion nerons



GTX14605 IHC Image

IHC analysis of human ovarian medulla tissue using GTX14605 PDE2A antibody.
Dilution : 1:1500



For full product information, images and publications, please visit our [website](#).