

PDE4A8 antibody

Cat. No. GTX14606

Host	Rabbit
Clonality	Polyclonal
Isotype	IgG
Applications	WB, ICC/IF, IHC-Fr, ELISA
Reactivity	Mouse, Rat

References (2)

Package

100 µg

Applications

Application Note

*Optimal dilutions/concentrations should be determined by the researcher.

Suggested dilution	Recommended dilution
WB	1:1000
ICC/IF	1:200
IHC-Fr	Assay dependent
ELISA	1:10000

Not tested in other applications.

Calculated MW 98 kDa. ([Note](#))

Properties

Form	Liquid
Buffer	Tris/Glycine, 0.5% BSA, 30% Glycerol
Preservative	0.02% Sodium azide
Storage	Store as concentrated solution. Centrifuge briefly prior to opening vial. For short-term storage (1-2 weeks), store at 4°C. For long-term storage, aliquot and store at -20°C or below. Avoid multiple freeze-thaw cycles.
Concentration	1.00-1.25 mg/ml (Please refer to the vial label for the specific concentration.)
Immunogen	Synthetic peptide specific only for PDE4A8 protein.
Purification	Purified by affinity chromatography
Conjugation	Unconjugated

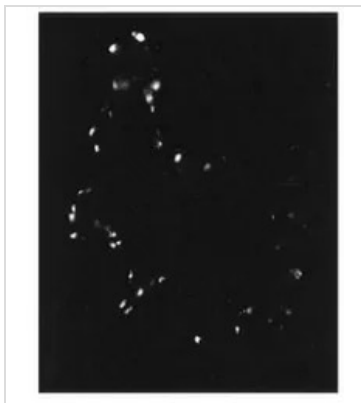
Note

For laboratory research use only. Not for any clinical, therapeutic, or diagnostic use in humans or animals. Not for animal or human consumption.

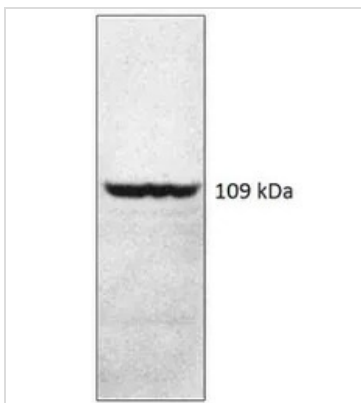
Purchasers shall not, and agree not to enable third parties to, analyze, copy, reverse engineer or otherwise attempt to determine the structure or sequence of the product.



For full product information, images and publications, please visit our [website](#).

DATA IMAGES

GTX14606 IHC-Fr Image

IHC-Fr analysis of rat seminiferous tubule tissue using GTX14606 PDE4A8 antibody.


GTX14606 WB Image

WB analysis of rat testis tissue lysate using GTX14606 PDE4A8 antibody.

Dilution : 1:500



For full product information, images and publications, please visit our [website](#).