

PDE4B antibody

Cat. No. GTX14611

Host	Rabbit
Clonality	Polyclonal
Isotype	IgG
Applications	WB, ICC/IF, IHC-P, IHC-Fr, IP, ELISA
Reactivity	Human, Mouse, Rat

Package
100 µg

Applications

Application Note

*Optimal dilutions/concentrations should be determined by the researcher.

Suggested dilution	Recommended dilution
WB	1:500-1:1000
ICC/IF	1:250
IHC-P	1:250
IHC-Fr	1:250
IP	1:350
ELISA	1:10000

Not tested in other applications.

Calculated MW 83 kDa. ([Note](#))

Product Note

This antibody detects all PDE4B proteins, including PDE4B1, PDE4B2, PDE4B3, and a 66 kDa PDE4B variant. It does not cross-react with other PDE family members such as PDE4A, PDE4C. And it may have minor crossreactivity to PDE4D.

Properties

Form	Liquid
Buffer	Tris/Glycine, 0.5% BSA, 30% Glycerol
Preservative	0.02% Sodium azide
Storage	Store as concentrated solution. Centrifuge briefly prior to opening vial. For short-term storage (1-2 weeks), store at 4°C. For long-term storage, aliquot and store at -20°C or below. Avoid multiple freeze-thaw cycles.
Concentration	0.68 mg/ml (Please refer to the vial label for the specific concentration.)
Immunogen	Synthetic peptide common to all PDE4B subtypes taken near N-terminal
Purification	Purified by affinity chromatography



For full product information, images and publications, please visit our [website](#).

Conjugation

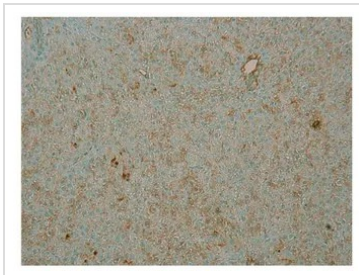
Unconjugated

Note

For laboratory research use only. Not for any clinical, therapeutic, or diagnostic use in humans or animals. Not for animal or human consumption.

Purchasers shall not, and agree not to enable third parties to, analyze, copy, reverse engineer or otherwise attempt to determine the structure or sequence of the product.

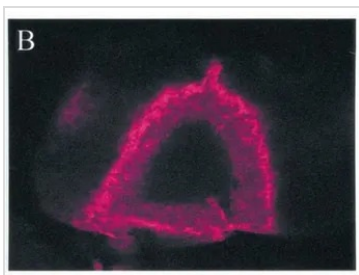
DATA IMAGES



GTX14611 ICC/IF Image

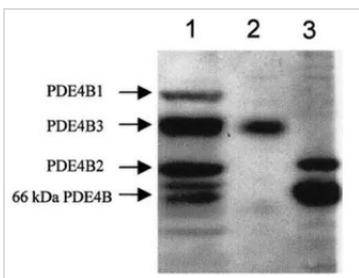
ICC/IF analysis of SH-SY5Y cells using GTX14611 PDE4B antibody.

Dilution : 1:250



GTX14611 IHC-Fr Image

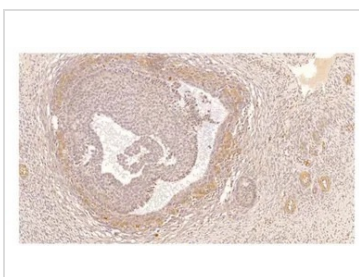
IHC-Fr analysis of seminiferous tubule tissue using GTX14611 PDE4B antibody.



GTX14611 WB Image

WB analysis of recombinant PDE4B3 protein(1 and 2), and rat testis tissue (3) lysates using GTX14611 PDE4B antibody.

Dilution : 1:500



GTX14611 IHC-P Image

IHC-P analysis of human ovarian medulla tissue using GTX14611 PDE4B antibody.

Dilution : 1:300



For full product information, images and publications, please visit our [website](#).